



RESIDENTIAL PRODUCT GUIDE

INTEGRATED TRANSAXLE COMPARISON CHART



RESIDENTIAL TRANSAXLES



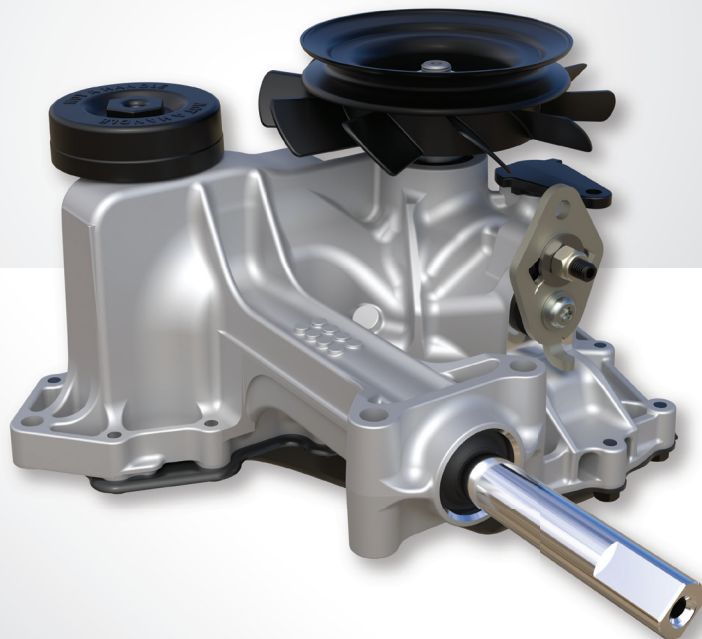
COMMERCIAL TRANSAXLES

FEATURE	RESIDENTIAL TRANSAXLES			COMMERCIAL TRANSAXLES					
	ZT-1800™	ZT-2200 (EZT®)	ZT-2800®	ZT-3100®	ZT-3200™	ZT-3400®	ZT-3800™	ZT-4400™	ZT-5400 POWERTRAIN®
Charge Pump	n/a	n/a	Optional	Standard	Standard	Standard	Standard	Standard	Standard
Shock Valves	n/a	n/a	Optional	Standard	Standard	Standard	Standard	Standard	Standard
Filtration	Mesh	Mesh	Paper	Paper	Paper	Paper	Paper	Paper	Paper
Axle Diameter (in)	0.75	1.0	1.0	1.0	1.125	1.125	1.125	1.375	1.375
Brake System	Internal Disc	External Cog Optional External Disc	Internal Cog Optional External Disc	Internal Cog Optional External Disc	Internal Cog Optional External Disc	Internal Cog Optional External Disc	Internal Cog	Internal Disc	Internal Disc
Weight of Unit (lbs)	18	29	32	32.5	33	34.5	38.5	55	57
Speed (mph)	6	7	8	9	9	10	11	12	18

ZT-1800™

THE MICRO ZT FOR COMPACT YARDS

- Hydro-Gear's lightest and most compact unit
- Maintenance-free design
- Proven performance in a compact package
- Durable 6cc pump & 10cc motor
- Perfect fit for vehicles weighing up to 667 lbs



RESIDENTIAL

ZT-1800 ZT-2200 ZT-2800

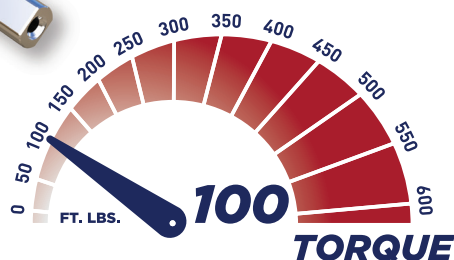
COMMERCIAL

ZT-3100 ZT-3200 ZT-3400 ZT-3600 ZT-3800 ZT-4400 ZT-5400



ZT-1800™

THE MICRO ZT FOR COMPACT YARDS



SPECIFICATIONS

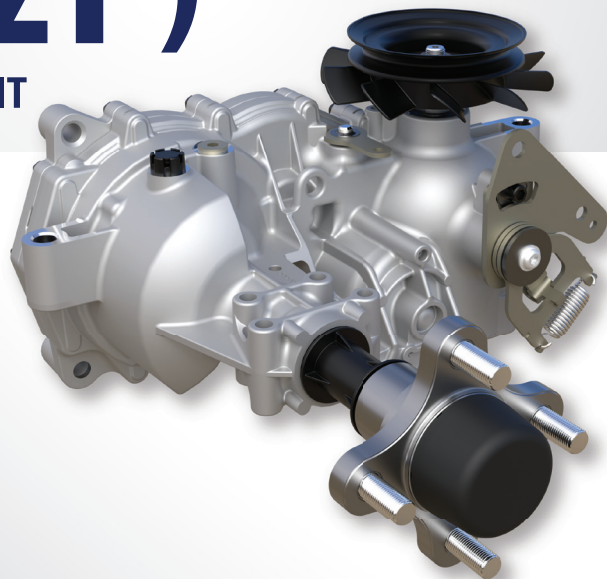
PUMP DISPLACEMENT	0.37 in ³ /rev 6 cc/rev
MOTOR DISPLACEMENT	0.61 in ³ /rev 10 cc/rev
Input Speeds MAX HI-IDLE (NO LOAD) MIN (LOADED)	3000 rpm 1800 rpm
OUTPUT TORQUE	up to 100 lb-ft up to 136 Nm
SPEED	up to 6 mph up to 10 kph
GROSS VEHICLE WEIGHT	up to 667 lbs up to 302 kg
AXLE SHAFT DIAMETER	0.75 in 19.05 mm
AXLE SHAFT OPTIONS	DD
WEIGHT OF UNIT	18 lbs 8.2 kg

Specifications subject to change without notice

ZT-2200 (EZT®)

HYDRO-GEAR'S MOST POPULAR INTEGRATED UNIT

- Low maintenance design
- Proven performance in a compact package
- Durable 10cc pump & 10cc motor
- 1" axle for increased load support
- Internal mesh oil filter for longer life
- External cog brake for maximum holding power
- External friction brake option



RESIDENTIAL

ZT-1800 ZT-2200 ZT-2800

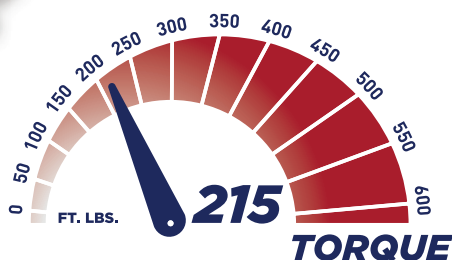
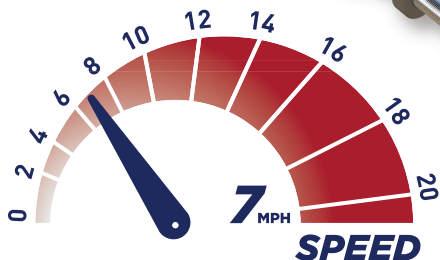
COMMERCIAL

ZT-3100 ZT-3200 ZT-3400 ZT-3600 ZT-3800 ZT-4400 ZT-5400



ZT-2200 (EZT®)

HYDRO-GEAR'S MOST POPULAR INTEGRATED UNIT



SPECIFICATIONS

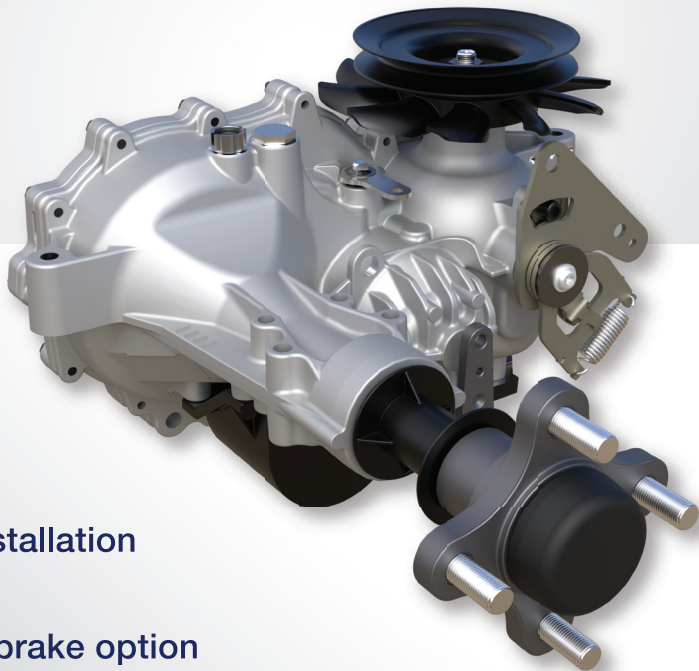
PUMP DISPLACEMENT	0.61 in ³ /rev 10 cc/rev
MOTOR DISPLACEMENT	0.61 in ³ /rev 10 cc/rev
Input Speeds MAX HI-IDLE (NO LOAD) MIN (LOADED)	3000 rpm 1800 rpm
OUTPUT TORQUE	up to 215 lb-ft up to 291 Nm
SPEED	up to 7 mph up to 11 kph
GROSS VEHICLE WEIGHT	up to 900 lbs up to 408 kg
AXLE SHAFT DIAMETER	1.0 in 25.4 mm
AXLE SHAFT OPTIONS	DD 4-bolt Flange
WEIGHT OF UNIT	29 lbs 13 kg

Specifications subject to change without notice

ZT-2800[®]

THE ESTATE-GRADE TRANSAXLE

- Hydro-Gear's most rugged residential transaxle for machines up to 1000 lbs
- Available with optional shock valves and charge pump for greater performance
- External oil filter for easy maintenance
- Optional internal expansion tank for easier installation
- Serviceable design for longer life
- Debris-free internal brake or external friction brake option



RESIDENTIAL

ZT-1800 ZT-2200 ZT-2800

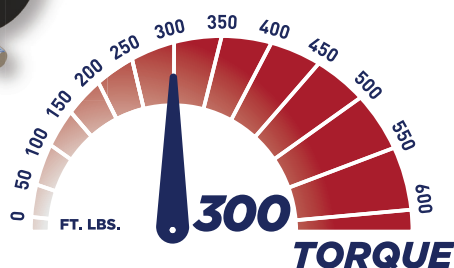
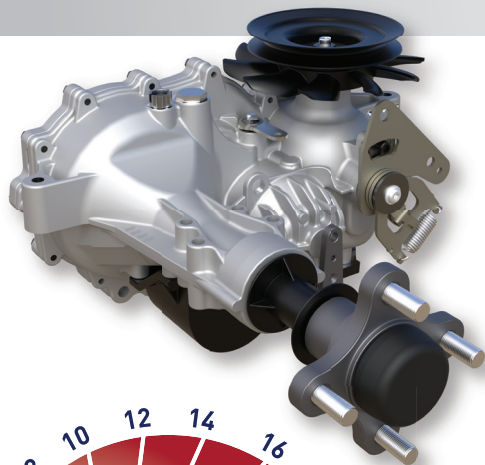
COMMERCIAL

ZT-3100 ZT-3200 ZT-3400 ZT-3600 ZT-3800 ZT-4400 ZT-5400



ZT-2800®

THE ESTATE-GRADE TRANSAXLE



SPECIFICATIONS

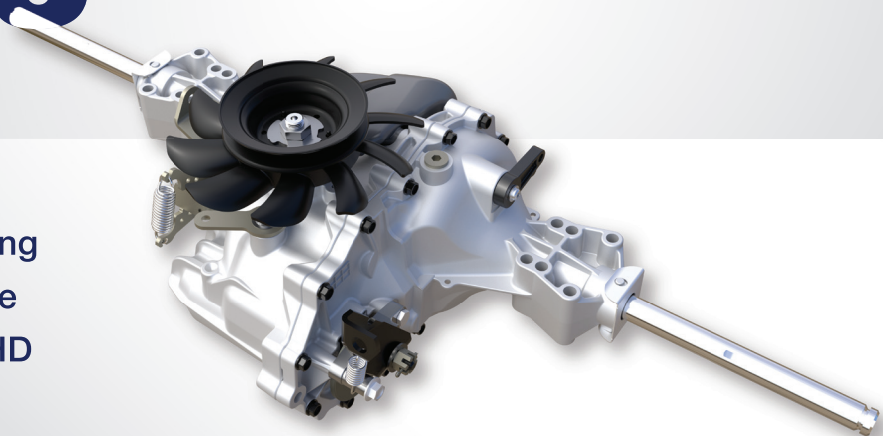
PUMP DISPLACEMENT	0.61 in ³ /rev 10 cc/rev
MOTOR DISPLACEMENT	0.97 in ³ /rev 16 cc/rev
Input Speeds MAX HI-IDLE (NO LOAD) MIN (LOADED)	3000 rpm 1800 rpm
OUTPUT TORQUE	up to 300 lb-ft up to 406 Nm
SPEED	up to 8 mph up to 12 kph
GROSS VEHICLE WEIGHT	up to 1000 lbs up to 453 kg
AXLE SHAFT DIAMETER	1.0 in 25.4 mm
AXLE SHAFT OPTIONS	Tapered 4 or 5 Bolt Flange
WEIGHT OF UNIT	32 lbs 14.5 kg

Specifications subject to change without notice

T SERIES™

BUILT FOR ANY SEASON

- Sturdy 3/4 in axle
- Infinite speed control for precise handling
- Maintenance-free design for ease of use
- Optional full-locking differential on T3 HD



T3 HD w/ Full-Locking Differential model shown

T1™ / T2® / T2-HP™ / T3 HD™

T SERIES™

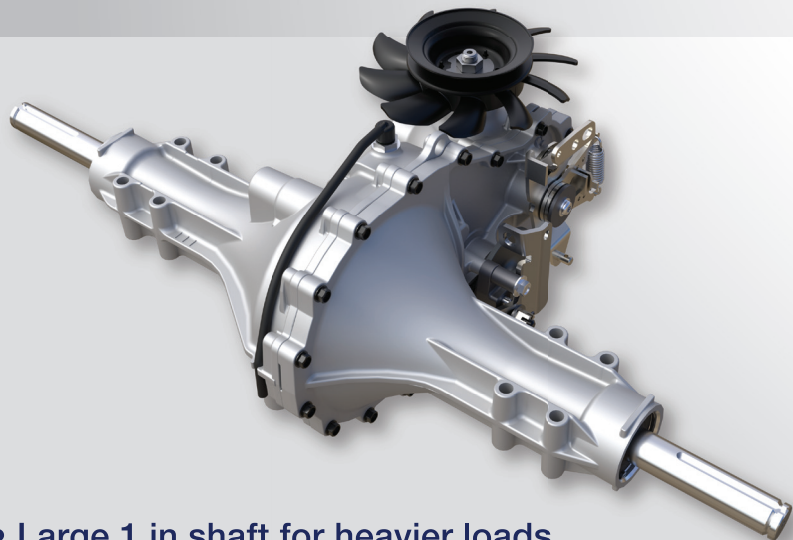
Specifications subject to change without notice

SPECIFICATIONS

	T1	T2		T2-HP	T3 HD		
Overall Transaxle Reduction	25.328:1	20.63:1	22.68:1	25.42:1	24.27:1	26.70:1	29.91:1
Input Speeds Max Hi-idle (No Load) Min (Loaded)	3000 rpm 1800 rpm				3000 rpm 1800 rpm		
Output Torque Continuous Intermittent	85 lb-ft 115 Nm 160 lb-ft 217 Nm	105 lb-ft 142 Nm 195 lb-ft 264 Nm	115 lb-ft 156 Nm 215 lb-ft 291 Nm	145 lb-ft 197 Nm 285 lb-ft 386 Nm	140 lb-ft 189 Nm 230 lb-ft 311 Nm	150 lb-ft 203 Nm 290 lb-ft 393 Nm	160 lb-ft 216 Nm 300 lb-ft 406 Nm
Axle Shaft Diameter	3/4 in - 19.05 mm						
Axle Shaft End Options	Keyed	Keyed or DD					
Parking Brake Type	Internal Wet Disc	External Disc					
Weight of Unit	21lbs - 9.5 kg	28 lbs - 12.7 kg					

G700[®]

DESIGNED FOR THE TOUGHEST JOBS



- Large 1 in shaft for heavier loads
- External oil filter for easier maintenance
- Rugged die-cast aluminium housing

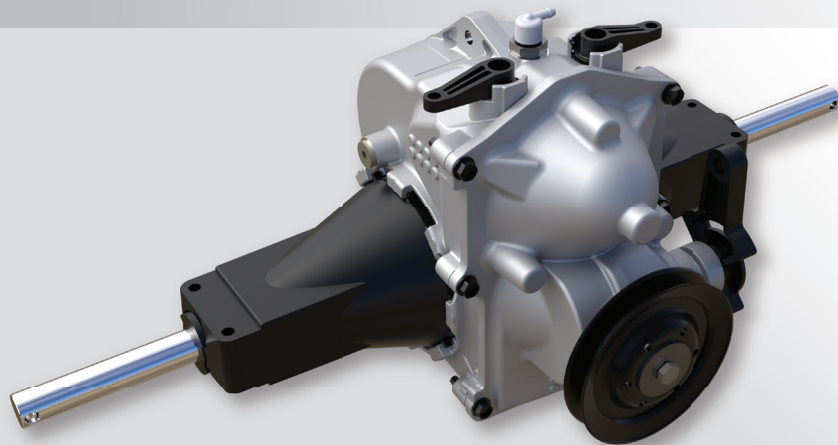
SPECIFICATIONS

Overall Transaxle Reduction	27.5:1
Pump Displacement	.61 in ³ /rev - 10cc/rev
Motor Displacement	.97 in ³ /rev - 16cc/rev
Charge Pump Displacement	.11 in ³ /rev - 1.9cc/rev
Input Speeds MAX HI-IDLE (NO LOAD) MIN (LOADED)	3600 rpm 1800 rpm
Output Torque CONTINUOUS INTERMITTENT	230 lb-ft - 312 Nm 445 lb-ft - 603 Nm
Weight on Tires (per unit) MAX w/ 20in TIRES MAX w/ 22in TIRES MAX w/ 23in TIRES	770 lb - 350 kg 700 lb - 318 kg 665 lb - 302 kg
Axle Shaft Diameter	1.0 in - 25.4 mm
Weight of Unit	42 lbs - 19 kg

Specifications subject to change without notice

SST™

GREAT FOR SNOW THROWERS



- Durable 3/4 in axle shaft
- Hydraulic parking brake
- Maintenance-free design for ease of use
- Independent tire control for easier steering

SPECIFICATIONS

Overall Transaxle Reduction	30.43:1
Input Speeds	
MAX HI-IDLE (NO LOAD)	2600 rpm
MIN (LOADED)	1800 rpm
Output Torque	
CONTINUOUS	62 lb-ft - 84 Nm
INTERMITTENT	130 lb-ft - 176 Nm
Axle Shaft Diameter	0.75 in - 19.05 mm
Axle Shaft Type	1/4 in through hole or keyed
Parking Brake Type	Hydraulic
Weight of Unit	21.4 lbs - 9.7 kg

Specifications subject to change without notice



COMMERCIAL PRODUCT GUIDE

INTEGRATED TRANSAXLE COMPARISON CHART



RESIDENTIAL TRANSAXLES



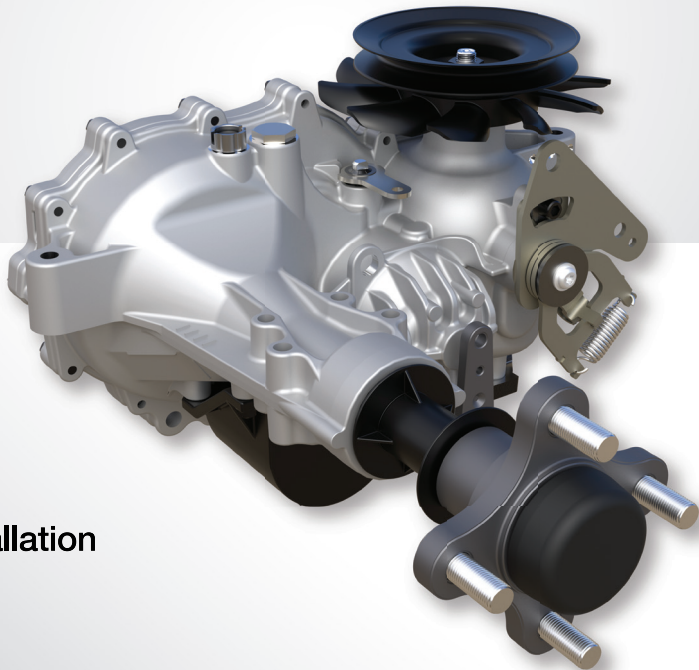
COMMERCIAL TRANSAXLES

FEATURE	RESIDENTIAL TRANSAXLES			COMMERCIAL TRANSAXLES					
	ZT-1800™	ZT-2200 (EZT®)	ZT-2800®	ZT-3100®	ZT-3200™	ZT-3400®	ZT-3800™	ZT-4400™	ZT-5400 POWERTRAIN®
Charge Pump	n/a	n/a	Optional	Standard	Standard	Standard	Standard	Standard	Standard
Shock Valves	n/a	n/a	Optional	Standard	Standard	Standard	Standard	Standard	Standard
Filtration	Mesh	Mesh	Paper	Paper	Paper	Paper	Paper	Paper	Paper
Axle Diameter (in)	0.75	1.0	1.0	1.0	1.125	1.125	1.125	1.375	1.375
Brake System	Internal Disc	External Cog Optional External Disc	Internal Cog Optional External Disc	Internal Cog Optional External Disc	Internal Cog Optional External Disc	Internal Cog Optional External Disc	Internal Cog	Internal Disc	Internal Disc
Weight of Unit (lbs)	18	29	32	32.5	33	34.5	38.5	55	57
Speed (mph)	6	7	8	9	9	10	11	12	18

ZT-3100®

HYDRO-GEAR COMMERCIAL TRANSAXLE

- A commercial entry-level transmission with high-efficiency 10cc pump & 16cc motor
- Included shock valves to protect the system and extend its life
- External oil filter for easy maintenance
- Optional internal expansion tank for easier installation
- Performance package - Shock valves, Cut steel gears, and Charge pump



RESIDENTIAL

ZT-1800 ZT-2200 ZT-2800

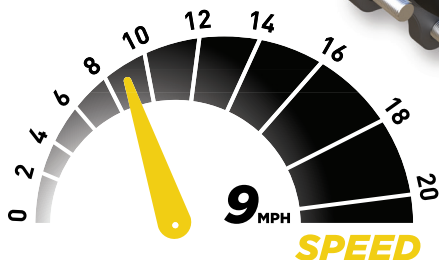
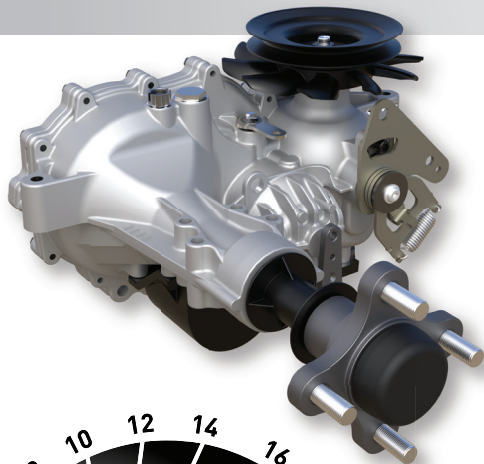
COMMERCIAL

ZT-3100 ZT-3200 ZT-3400 ZT-3600 ZT-3800 ZT-4400 ZT-5400



ZT-3100[®]

HYDRO-GEAR COMMERCIAL TRANSAXLE



SPECIFICATIONS

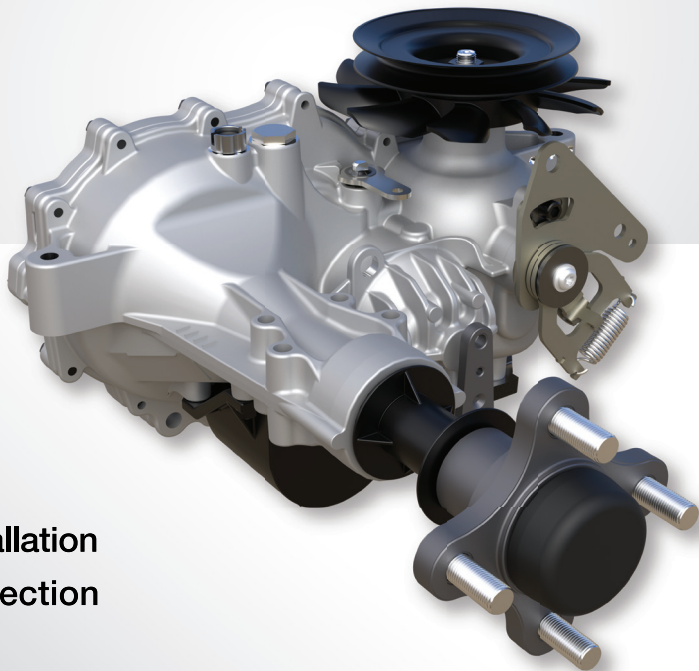
PUMP DISPLACEMENT	0.61 in ³ /rev 10 cc/rev
MOTOR DISPLACEMENT	0.97 in ³ /rev 16 cc/rev
Input Speeds MAX HI-IDLE (NO LOAD) MIN (LOADED)	3600 rpm 1800 rpm
OUTPUT TORQUE	up to 350 lb-ft up to 474 Nm
SPEED	up to 9 mph up to 14 kph
GROSS VEHICLE WEIGHT	up to 1200 lbs up to 544 kg
AXLE SHAFT DIAMETER	1.0 in 25.4 mm
AXLE SHAFT OPTIONS	Tapered 4 or 5 Bolt Flange
WEIGHT OF UNIT	32.5 lbs 14.7 kg

Specifications subject to change without notice

ZT-3200™

HYDRO-GEAR COMMERCIAL TRANSAXLE

- Commercial grade transmission with high-efficiency 10cc pump & 16cc motor
- Performance package - Shock valves, Cut steel gears, and Charge pump
- Durable 1-1/8" axle for heavier loads
- Optional internal expansion tank for easier installation
- Standard shock valves for added system protection and extended life



RESIDENTIAL

ZT-1800 ZT-2200 ZT-2800

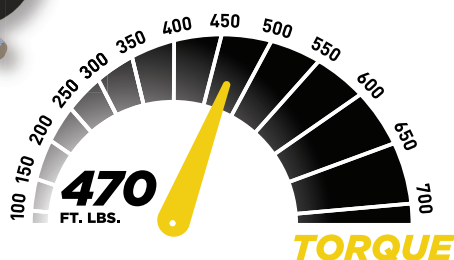
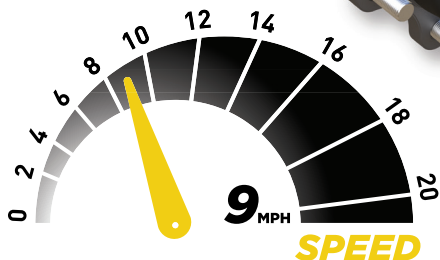
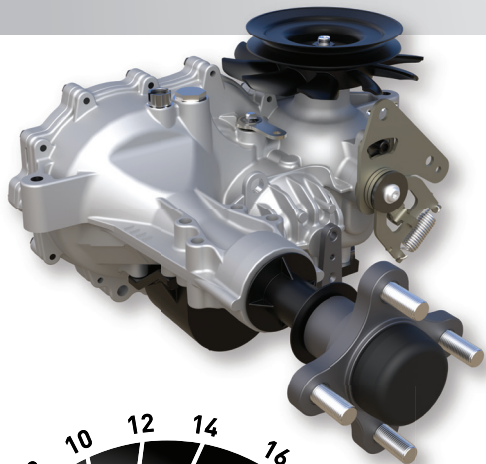
COMMERCIAL

ZT-3100 **ZT-3200** ZT-3400 ZT-3600 ZT-3800 ZT-4400 ZT-5400



ZT-3200™

HYDRO-GEAR COMMERCIAL TRANSAXLE



SPECIFICATIONS

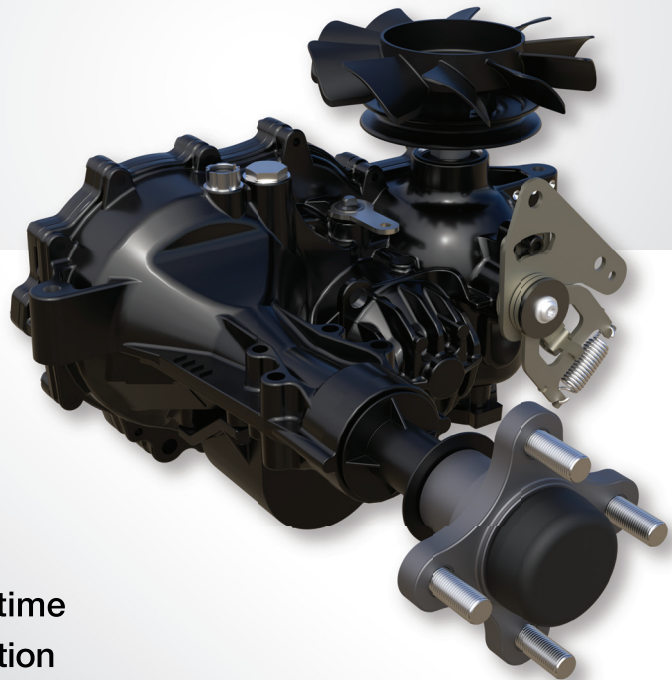
PUMP DISPLACEMENT	0.61 in ³ /rev 10 cc/rev
MOTOR DISPLACEMENT	0.97 in ³ /rev 16 cc/rev
Input Speeds MAX HI-IDLE (NO LOAD) MIN (LOADED)	3600 rpm 1800 rpm
OUTPUT TORQUE	up to 470 lb-ft up to 637 Nm
SPEED	up to 9 mph up to 14 kph
GROSS VEHICLE WEIGHT	up to 1500 lbs up to 680 kg
AXLE SHAFT DIAMETER	1.125 in 28.56 mm
AXLE SHAFT OPTIONS	Tapered 4 or 5 Bolt Flange
WEIGHT OF UNIT	33 lbs 15 kg

Specifications subject to change without notice

ZT-3400®

HYDRO-GEAR COMMERCIAL TRANSAXLE

- Designed for mid-size commercial vehicles
- Unmatched maneuverability in tight spaces
- Performance package - Shock valves, Cut steel gears, and Charge pump
- Durable 1-1/8" axle for heavier loads
- High-efficiency 12cc pump & 16cc motor
- Reliable and quiet performance each and every time
- Optional internal expansion tank for easier installation



RESIDENTIAL

ZT-1800 ZT-2200 ZT-2800

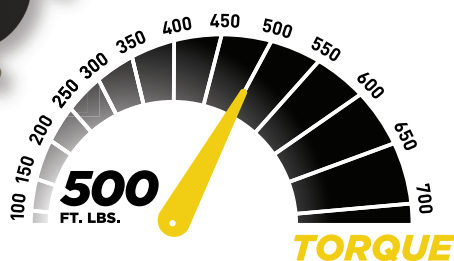
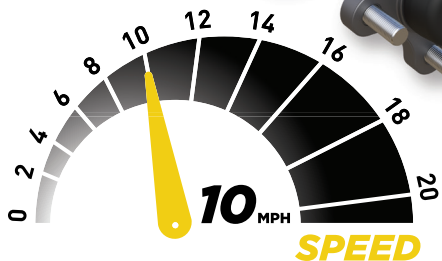
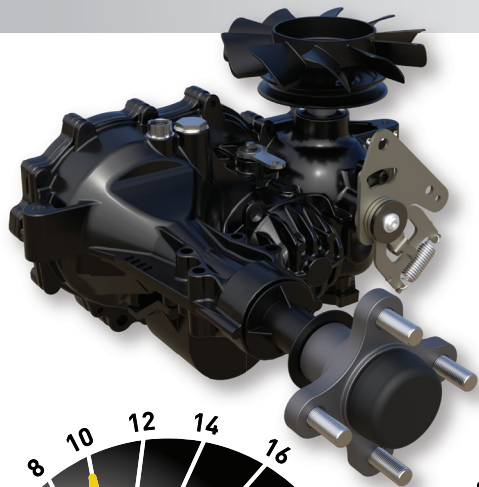
COMMERCIAL

ZT-3100 ZT-3200 **ZT-3400** ZT-3600 ZT-3800 ZT-4400 ZT-5400



ZT-3400[®]

HYDRO-GEAR COMMERCIAL TRANSAXLE



SPECIFICATIONS

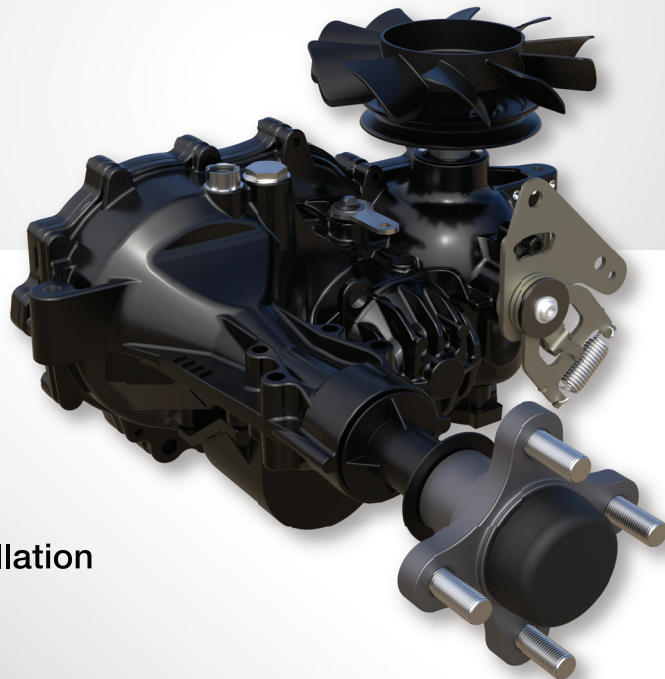
PUMP DISPLACEMENT	0.73 in ³ /rev 12 cc/rev
MOTOR DISPLACEMENT	0.97 in ³ /rev 16 cc/rev
Input Speeds MAX HI-IDLE (NO LOAD) MIN (LOADED)	3600 rpm 1800 rpm
OUTPUT TORQUE	up to 500 lb-ft up to 677 Nm
SPEED	up to 10 mph up to 16 kph
GROSS VEHICLE WEIGHT	up to 1600 lbs up to 725 kg
AXLE SHAFT DIAMETER	1.125 in 28.56 mm
AXLE SHAFT OPTIONS	Tapered 4 or 5 Bolt Flange
WEIGHT OF UNIT	34.5 lbs 15.6 kg

Specifications subject to change without notice

ZT-3600™

HYDRO-GEAR COMMERCIAL TRANSAXLE

- Designed for premium commercial vehicles
- Performance package - shock valves, all-steel gear train, and charge pump
- Durable 1-1/8" axle for heavier loads
- High-efficiency 12cc pump & 16cc motor
- Optional internal expansion tank for easier installation
- A larger charge pump provides added capability in tough commercial applications



RESIDENTIAL

ZT-1800 ZT-2200 ZT-2800

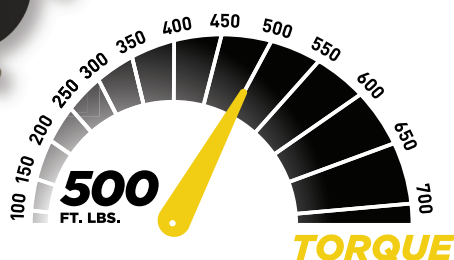
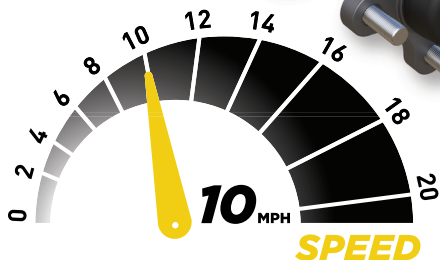
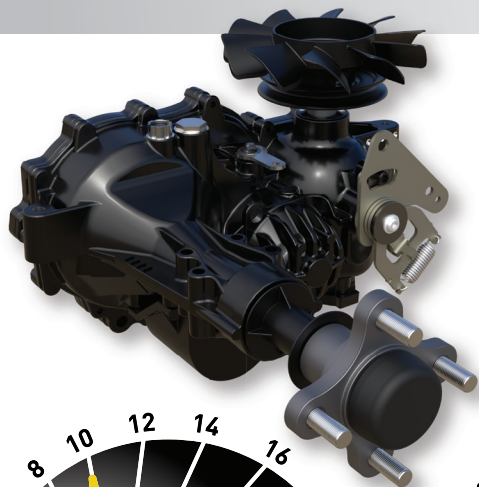
COMMERCIAL

ZT-3100 ZT-3200 ZT-3400 **ZT-3600** ZT-3800 ZT-4400 ZT-5400



ZT-3600™

HYDRO-GEAR COMMERCIAL TRANSAXLE



SPECIFICATIONS

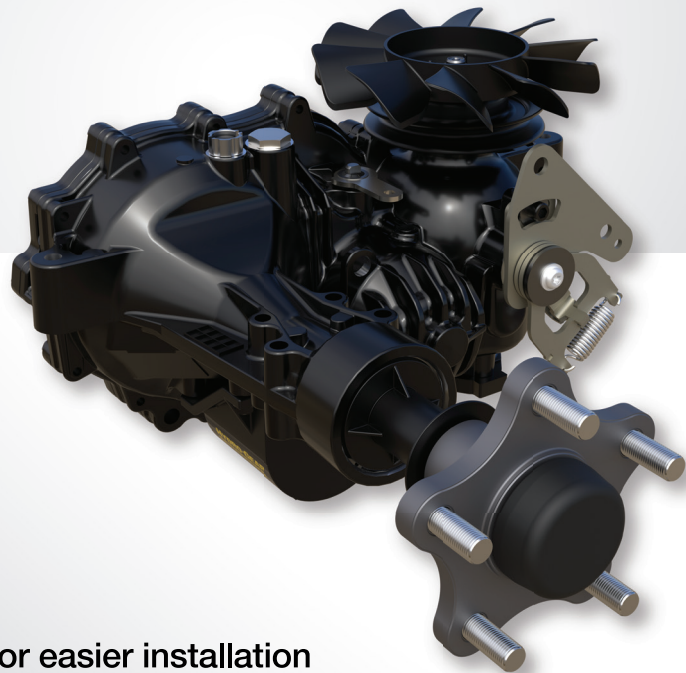
PUMP DISPLACEMENT	0.73 in ³ /rev 12 cc/rev
MOTOR DISPLACEMENT	0.97 in ³ /rev 16 cc/rev
Input Speeds MAX HI-IDLE (NO LOAD) MIN (LOADED)	3600 rpm 1800 rpm
OUTPUT TORQUE	up to 500 lb-ft up to 677 Nm
SPEED	up to 10 mph up to 16 kph
GROSS VEHICLE WEIGHT	up to 1600 lbs up to 725 kg
AXLE SHAFT DIAMETER	1.125 in 28.56 mm
AXLE SHAFT OPTIONS	Tapered 4 or 5 Bolt Flange
WEIGHT OF UNIT	34.5 lbs 15.6 kg

Specifications subject to change without notice

ZT-3800™

HYDRO-GEAR COMMERCIAL TRANSAXLE

- Designed for premium commercial vehicles
- Unmatched maneuverability in tight spaces
- High-efficiency 12cc pump & 16cc motor
- Durable 1-1/8" axle for heavier loads
- Upgraded housing, all-steel gear train, and larger axle bearing provides added weight capability for heavier vehicles
- Optional oil cooler port or internal expansion tank for easier installation



RESIDENTIAL

ZT-1800 ZT-2200 ZT-2800

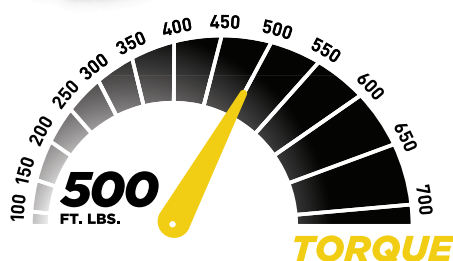
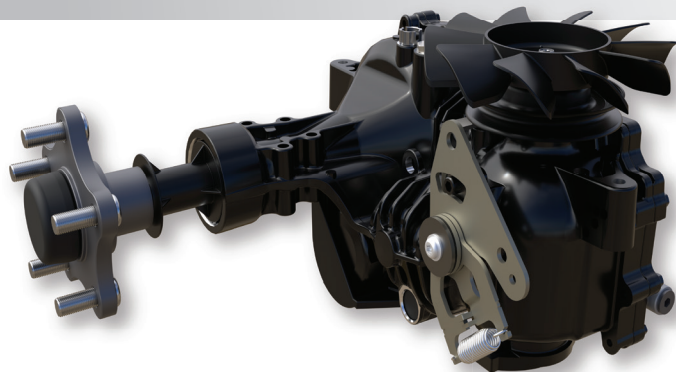
COMMERCIAL

ZT-3100 ZT-3200 ZT-3400 ZT-3600 **ZT-3800** ZT-4400 ZT-5400



ZT-3800™

HYDRO-GEAR COMMERCIAL TRANSAXLE



SPECIFICATIONS

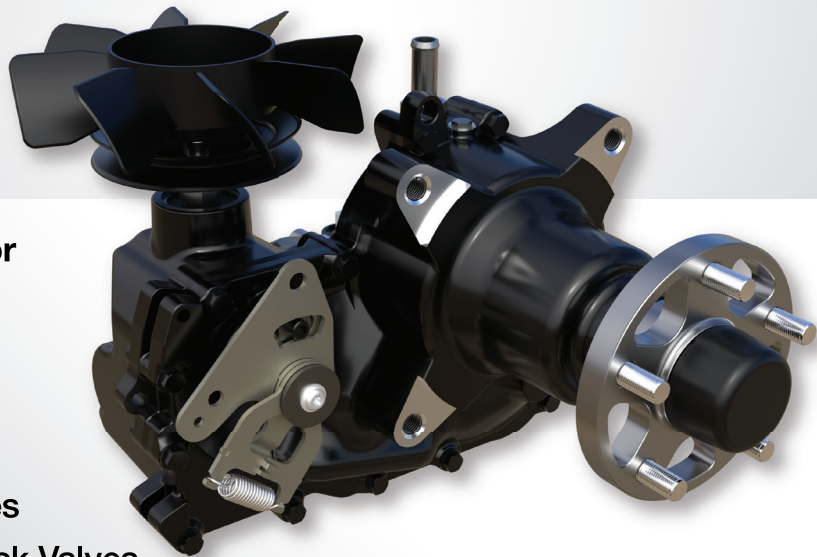
PUMP DISPLACEMENT	0.73 in ³ /rev 12 cc/rev
MOTOR DISPLACEMENT	0.97 in ³ /rev 16 cc/rev
Input Speeds MAX HI-IDLE (NO LOAD) MIN (LOADED)	3600 rpm 1800 rpm
OUTPUT TORQUE	up to 500 lb-ft up to 677 Nm
SPEED	up to 11 mph up to 17 kph
GROSS VEHICLE WEIGHT	up to 1800 lbs up to 816 kg
AXLE SHAFT DIAMETER	1.125 in 28.56 mm
AXLE SHAFT OPTIONS	Tapered 4 or 5 Bolt Flange
WEIGHT OF UNIT	35.8 lbs 16.2 kg

Specifications subject to change without notice

ZT-4400™

HEAVY-DUTY COMMERCIAL TRANSAXLE

- Revolutionary design that improves operator control while reducing vibration and noise
- Perfect for machines up to 1800 lbs
- High capacity thrust bearing for longer life
- Heavy-duty roller bearings
- Large 1-3/8" axle to support heavier machines
- Performance package - Charge Pump & Shock Valves



RESIDENTIAL

ZT-1800 ZT-2200 ZT-2800

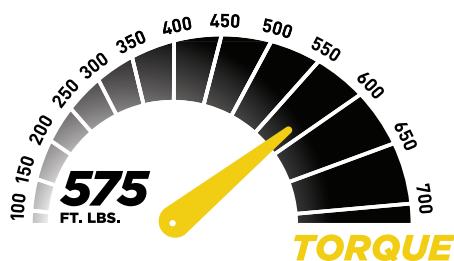
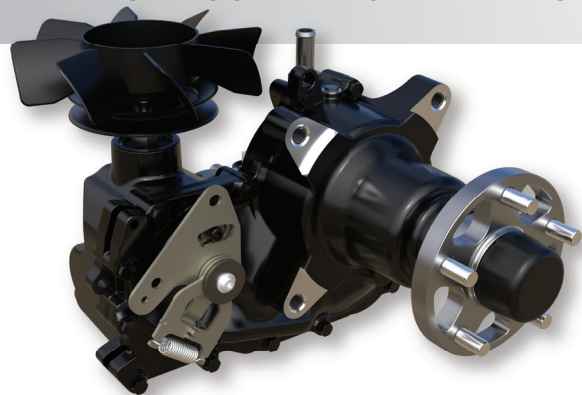
COMMERCIAL

ZT-3100 ZT-3200 ZT-3400 ZT-3600 ZT-3800 **ZT-4400** ZT-5400



ZT-4400™

HEAVY-DUTY COMMERCIAL TRANSAXLE



SPECIFICATIONS

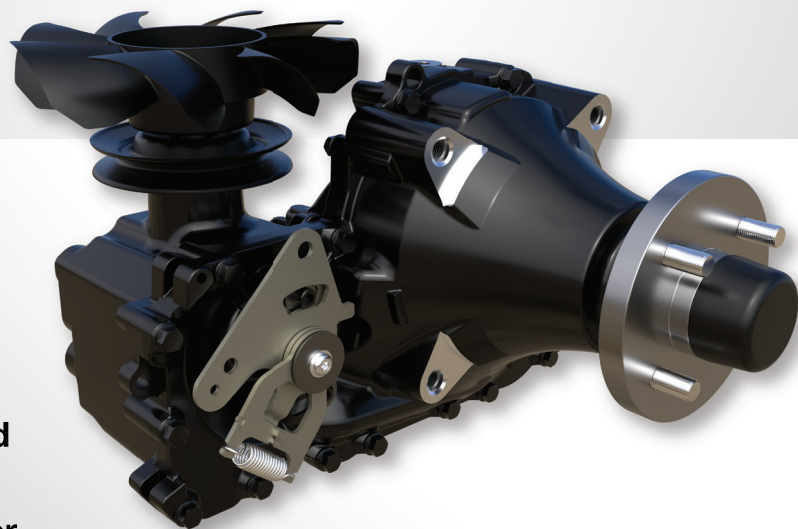
PUMP DISPLACEMENT	0.73 in ³ /rev 12 cc/rev
MOTOR DISPLACEMENT	0.97 in ³ /rev 16 cc/rev
Input Speeds MAX HI-IDLE (NO LOAD) MIN (LOADED)	3600 rpm 1800 rpm
OUTPUT TORQUE	up to 575 lb-ft up to 780 Nm
SPEED	up to 12 mph up to 19 kph
GROSS VEHICLE WEIGHT	up to 1800 lbs up to 816 kg
AXLE SHAFT DIAMETER	1.375 in 35 mm
AXLE SHAFT OPTIONS	Tapered 4 or 5 Bolt Flange
WEIGHT OF UNIT	55 lbs 25 kg

Specifications subject to change without notice

ZT-5400 POWERTRAIN®

HEAVY-DUTY COMMERCIAL TRANSAXLE

- Standard performance package
- Reliable and quiet performance each and every time
- Heavy-duty 1-3/8" axle for machines weighing up to 2200 lbs
- Optional transport mode for increased speed
- Our largest and most durable integrated unit with a high efficiency 16cc pump & 21cc motor



RESIDENTIAL

ZT-1800 ZT-2200 ZT-2800

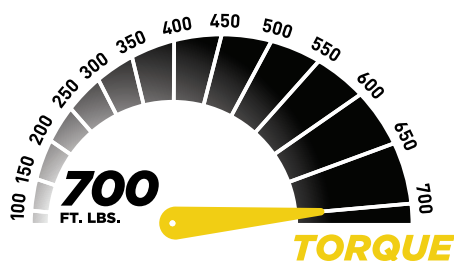
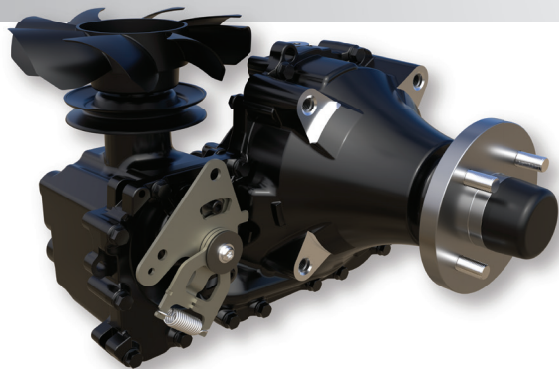
COMMERCIAL

ZT-3100 ZT-3200 ZT-3400 ZT-3600 ZT-3800 ZT-4400 ZT-5400



ZT-5400 POWERTRAIN®

HEAVY-DUTY COMMERCIAL TRANSAXLE



SPECIFICATIONS

PUMP DISPLACEMENT	0.97 in ³ /rev 16 cc/rev
MOTOR DISPLACEMENT	1.33 in ³ /rev 21.8 cc/rev
Input Speeds MAX HI-IDLE (NO LOAD) MIN (LOADED)	3600 rpm 1800 rpm
OUTPUT TORQUE	up to 700 lb-ft up to 949 Nm
SPEED (TRANSPORT MODE)	up to 18 mph up to 29 kph
GROSS VEHICLE WEIGHT	up to 2200 lbs up to 997 kg
AXLE SHAFT DIAMETER	1.375 in 35 mm
AXLE SHAFT OPTIONS	Tapered 4 or 5 Bolt Flange
WEIGHT OF UNIT	57 lbs 25.85 kg

Specifications subject to change without notice

HEM™

HIGH-EFFICIENCY HYDRAULIC MOTORS

MOTOR SPECIFICATIONS

	HEM 10	HEM 12
DISPLACEMENT	10.2 cc/rev [0.62 in ³ /rev]	12 cc/rev [0.73 in ³ /rev]
OUTPUT SPEED RANGE	50 – 4200 rpm	50 – 4200 rpm
SYSTEM PRESSURE*		
CONTINUOUS	2500 psi [172 bar]	2500 psi [172 bar]
INTERMITTENT	3500 psi [241 bar]	3500 psi [241 bar]
PEAK	4500 psi [310 bar]	4500 psi [310 bar]
WEIGHT	6.5 lbs [2.9 kg]	6.5 lbs [2.9 kg]

Application Review recommended for heavy duty cycles | *Based on designed hours of life

MOTOR FEATURES

- Improved noise quality that provides increased operator comfort
- Longer durability for years of efficient, high-performing use
- Optional speed sensor for precise control
- The perfect choice for any medium-duty application



APPLICATIONS

- Augers
- Bow Thrusters
- Conveyors
- Fan Drives
- Hand Tools
- Product Pump Drives
- Rack Drives
- Saw Drive
- Spinners
- Swing Drives
- Vibratory Drives
- Wheel Drives
- Winch Drives

Specifications subject to change without notice

HGMTM PISTON WHEEL MOTORS

HGM SPECIFICATIONS

	HGM-H		HGM-L
GEOMETRIC DISPLACEMENT	14.93 in ³ /rev [244.7 cc/rev]	17.84 in ³ /rev [292.3 cc/rev]	17.84 in ³ /rev [292.3 cc/rev]
MAXIMUM SPEED			
CONTINUOUS	210 rpm	185 rpm	185 rpm
INTERMITTENT ¹	250 rpm	210 rpm	210 rpm
MAXIMUM TORQUE ³			
CONTINUOUS	225 ft-lbf [305 Nm]	266 ft-lbf [363 Nm]	291 ft-lbf [395 Nm]
INTERMITTENT ¹	400 ft-lbf [542 Nm]	467 ft-lbf [633 Nm]	516 ft-lbf [700 Nm]
PEAK ²	550 ft-lbf [746 Nm]	658 ft-lbf [892 Nm]	716 ft-lbf [972 Nm]

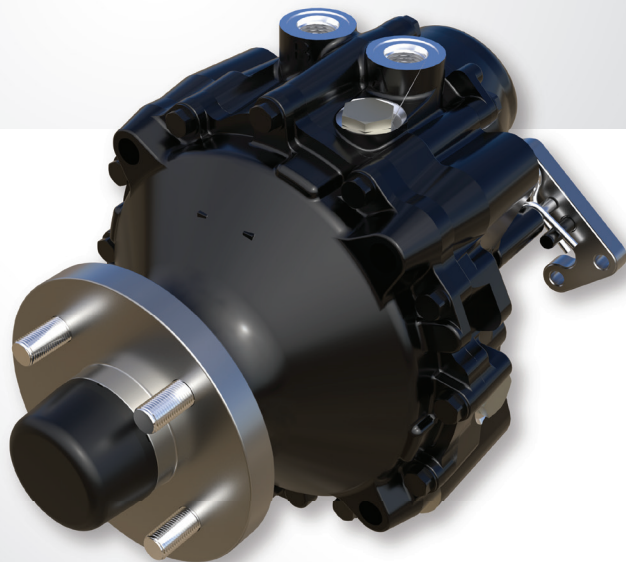
1) Intermittent operation; the permissible values may occur for max. 10% of every minute.

2) Peak load: the permissible values may occur for max. 1% of every minute.

3) 70 SUS oil at 210°F at 15 gpm and 1000 psi and 10 gpm at 3000 psi.

MOTOR FEATURES

- Industry standard 4 or 5 bolt mounting options, with internal wet disc brake
- Outstanding low-speed performance without cogging



Specifications subject to change without notice

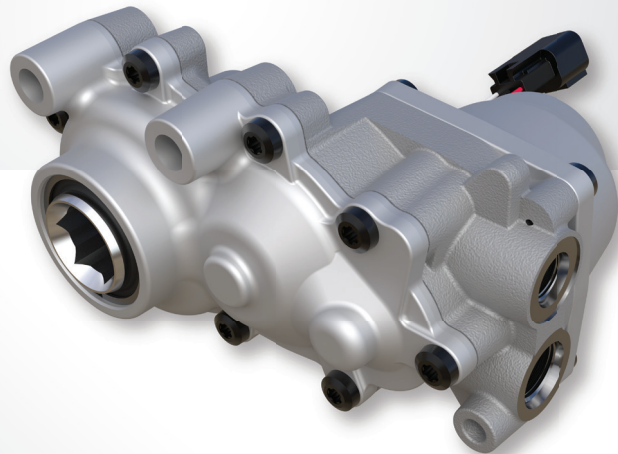
AGM6™

PISTON REDUCTION MOTOR

**A FIXED DISPLACEMENT AXIAL PISTON MOTOR
COUPLED TO A MECHANICAL GEAR REDUCTION
FOR OPTIMAL TRANSFER OF POWER.**

MOTOR FEATURES

- Uni-Directional or Bi-Directional Configuration
- Low-speed operation—down to 1-2 rpm
- High-pressure seals—no case drain required on uni-directional configuration
- Constant speed over a wide temperature range
- Speed sensor output allows for precise RPM control
- Compact, light-weight package



APPLICATIONS

- Augers
- Belt Drives
- Fan Drives
- Roller Drives
- Vibratory Drives
- Winch Drives
- Automatic Clamping Equipment
- Conveyors
- Process Machinery
- Swing Drives
- Wheel Drives

AGM6™

PISTON REDUCTION MOTOR

AGM6 SPECIFICATIONS

GEOMETRIC DISPLACEMENT

2.0 in³/rev [32 cc/rev]

PRESSURE RATING

CONTINUOUS

950 psi [65 bar]

INTERMITTENT

1450 psi [100 bar]

PEAK

1800 psi [124 bar]

OUTPUT SPEED

CONTINUOUS

120 rpm

PEAK

360 rpm

TORQUE

CONTINUOUS

15 ft-lb

PEAK

26 ft-lb

CASE PRESSURE

CONTINUOUS

200 psi [14 bar]

INTERMITTENT

300 psi [21 bar]

WEIGHT

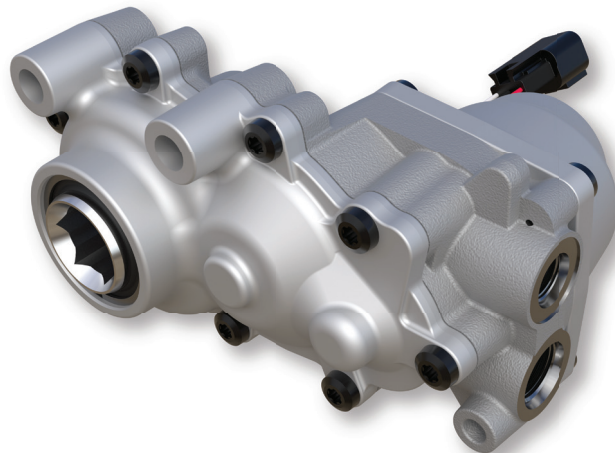
4.5 lbs [2kg]

OUTPUT SHAFT

7/8 in. Hex

SPEED SENSOR OPTIONS

Deutsch or Delphi



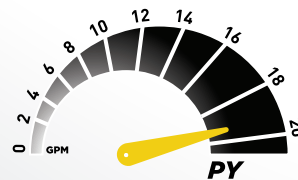
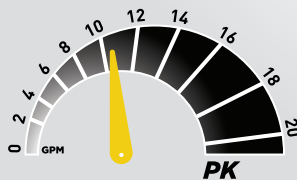
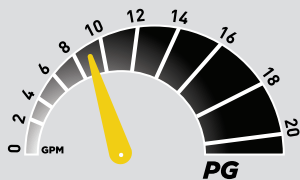
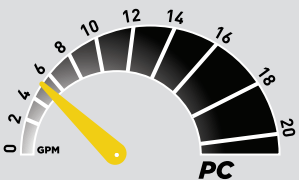
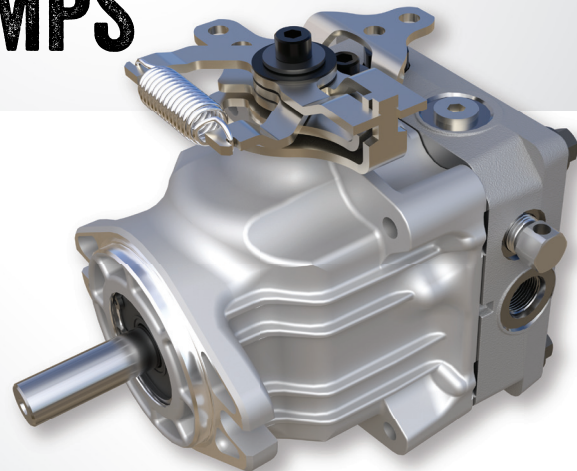
Specifications subject to change without notice

P SERIES[®] PISTON PUMPS

PUMP OPTIONS

- Return-to-neutral device for smooth de-stroke capability
- Most industry-standard shaft options for greater adaptability
- Tandem pumps for multi-circuits
- Auxiliary pumps to provide power to additional functions
- Cooling fan when additional cooling is desired

MAX GALLONS PER MINUTE



P SERIES® PISTON PUMPS

PUMP SPECIFICATIONS

	PC	PG	PK	PR	PY
DISPLACEMENT	0.37 in ³ /rev [6.1 cc/rev]	0.62in ³ /rev [10.2 cc/rev]	0.73 in ³ /rev [12 cc/rev]	0.97 in ³ /rev [16 cc/rev]	1.33 in ³ /rev [21.8 cc/rev]
SYSTEM OPERATING PRESSURE					
CONTINUOUS	750 psi [51 bar]	1500 psi [103 bar]	1500 psi [103 bar]	1500 psi [103 bar]	1500 psi [103 bar]
INTERMITTENT	1750 psi [120 bar]	2100 psi [145 bar]	2100 psi [145 bar]	2500 psi [172 bar]	2750 psi [190 bar]
PEAK	2500 psi [172 bar]	3500 psi [240 bar]	3500 psi [240 bar]	3750 psi [260 bar]	3750 psi [260 bar]
PUMP PERFORMANCE					
@ 2400 RPM/1000 PSI	3.6 gpm [13.6 l/min]	6.1 gpm [23.1 l/min]	7.1 gpm [26.8 l/min]	9.6 gpm [36.3 l/min]	13.1 gpm [49.6 l/min]
@ 3000 RPM/1000 PSI	4.5 gpm [17.0 l/min]	7.6 gpm [28.8 l/min]	8.9 gpm [33.6 l/min]	12 gpm [45.4 l/min]	16.4 gpm [62.1 l/min]
@ 3600 RPM/1000 PSI	5.4 gpm [20.4 l/min]	9.2 gpm [34.8 l/min]	10.8 gpm [40.8 l/min]	14.4 gpm [54.5 l/min]	19.6 gpm [74.2 l/min]
CHARGE PUMP DISPLACEMENT(S)	0.13 in ³ /rev [2.1 cc/rev]	0.11/0.13 in ³ /rev [1.9/2.1 cc/rev]	0.19 in ³ /rev [3.2 cc/rev]	0.13/0.19 in ³ /rev [2.1/3.2 cc/rev]	0.25 in ³ /rev [4.1 cc/rev]

PUMP OIL TEMPERATURE

MAX. INTERMITTENT (HOTTEST PT)

230 °F [110 °C]

NORMAL OPERATING RANGE

-10 to 200 °F [-23 to 93 °C]

Specifications subject to change without notice



DEDICATED TO YOUR SUCCESS YEAR AFTER YEAR

Headquartered in Sullivan, Illinois, Hydro-Gear is a world leader in the design and manufacturing of precision drive solutions for the commercial, residential, and electric markets. With multiple manufacturing sites and global operations, Hydro-Gear's goal is to ensure our products and services always meet our customer's rigorous requirements and exceed their expectations.



1.877.728.7410
info@hydro-gear.com