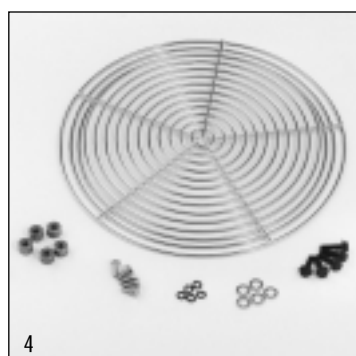
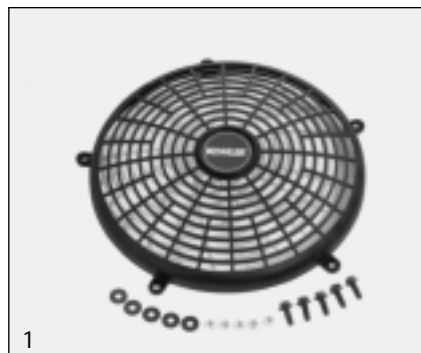


# GUARDS/BAFFLES/BLOWER HOUSINGS

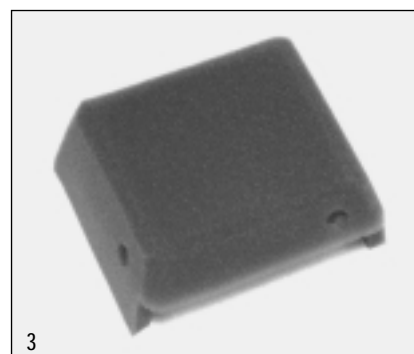
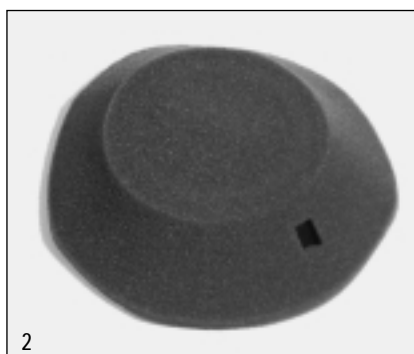
All Models



## FIXED GUARDS (MEET EUROPEAN SAFETY STANDARDS)

Model	Plastic, Stylized 1	Wire, Deep 2	Tool 3	Wire, Standard 4	Metal, Recoil 5
CS8.5-12 Less recoil	—	—	—	63 755 17-S	—
CH/CV11-16/460-493 Less recoil	12 755 65-S* (Shown)	—	—	12 755 44-S	(Shown) 12 755 48-S
CH/CV17-26/730-745 Less recoil	24 755 81-S*	24 755 94-S*	24 455 01-S	—	—
TH520-575 Less recoil	12 755 65-S*	—	—	—	—

\*Guard kits 24 755 81-S and 24 755 94-S include threaded inserts (24 332 01-S) and insert tool (24 455 01-S) to attach guard to existing blower housing. Tool is reusable. If engine has a metal grass screen, then only guard kit 24 755 94-S should be used. It closes the gap to provide better "finger probe" protection. In addition, guard 24 755 94-S is required in open applications (mowers, etc.) to protect the metal screen from potential damage.



## RECOIL STARTER FILTERS

Help prevent dust, dirt and debris from entering around recoil starter.

Part No.	Notes	Models	Item
63 755 18-S	Includes handle hole, Velcro, maintenance label and instructions.	CS4-6	1
12 050 02-S*	Includes handle hole. Conforms to shape of recoil housing when using fasteners*.	CV11-16/460-493	2
15 050 01-S**	Includes handle hole.	CH6	3

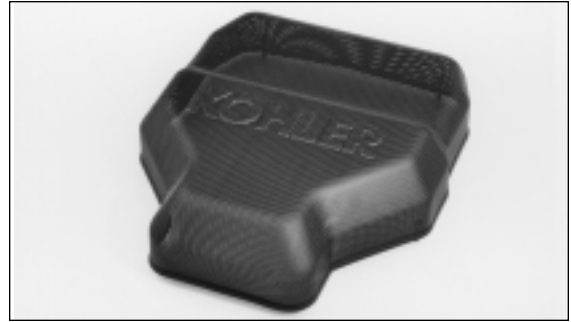
\* For first-time usage, also order (10) 12 290 01-S Velstuds for holding the filter in place. Velstuds are reusable; they interlock with slots in starter housing.

\*\* Also order 63 290 01-S Velcro strip (4.75" long). Cut into pieces for attachment of filter to starter housing.

## COMMERCIAL GRASS SCREEN

Kit includes wire mesh grass screen, upper housing, hardware and instruction sheet.

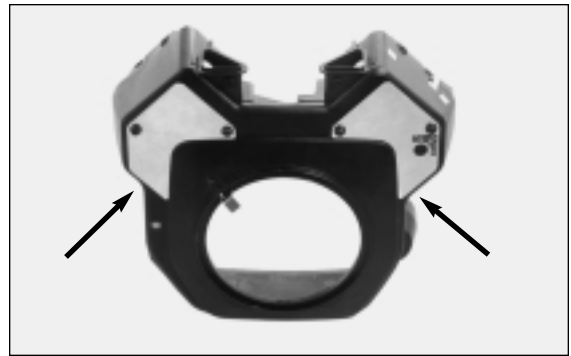
Kit No.	Description	Model
66 755 02-S	Black Screen, Gray Bezel	LV625-675
66 755 03-S	Black Screen, Black Bezel	LV625-675



## BLOWER HOUSING CLEAN OUT PANELS

Kit No.	Description	Model
25 755 20-S	Matte Black Panel (2)	CH/CV17-26/730-745, TH520-575
25 755 21-S	Zinc Dichromate Panel (2) (Shown)	CH/CV17-26/730-745 TH520-575

Allows for cleaning debris from behind blower housing and also servicing of ignition modules. Kit includes instructions/template for cutting holes in blower housing, plus panels (one with pop-out plug and label for keyswitch), mounting clips and screws. (Blower housing not included.)

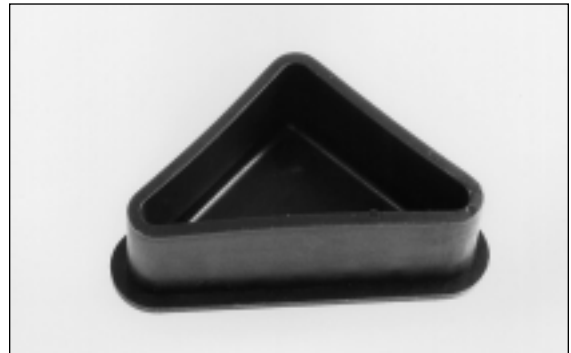


## BLOWER HOUSING PLUGS

Part No.	Description	Model
24 096 17-S*	Triangular Plug (1) (Shown)	CH/CV17-26/ 730-745
24 096 85-S**	Triangular Plug With Lip (1)	CV17-26/ 730-745

\*Seals the triangular hole in the blower housing underneath the air cleaner. Two required for CH twins, one for CV twins.

\*\*Similar to 24 096 17-S, but has an extended rubber lip. Seals the triangular hole (under the air cleaner) through which the breather hose is routed. One required.



## DUCTED AIR KIT

Kit No.	Description	Model
24 755 14-S	Ducted Air Kit	CH18-26/ 730-745

