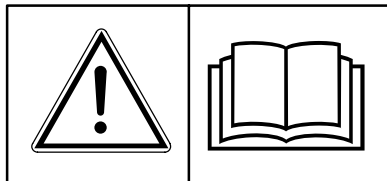
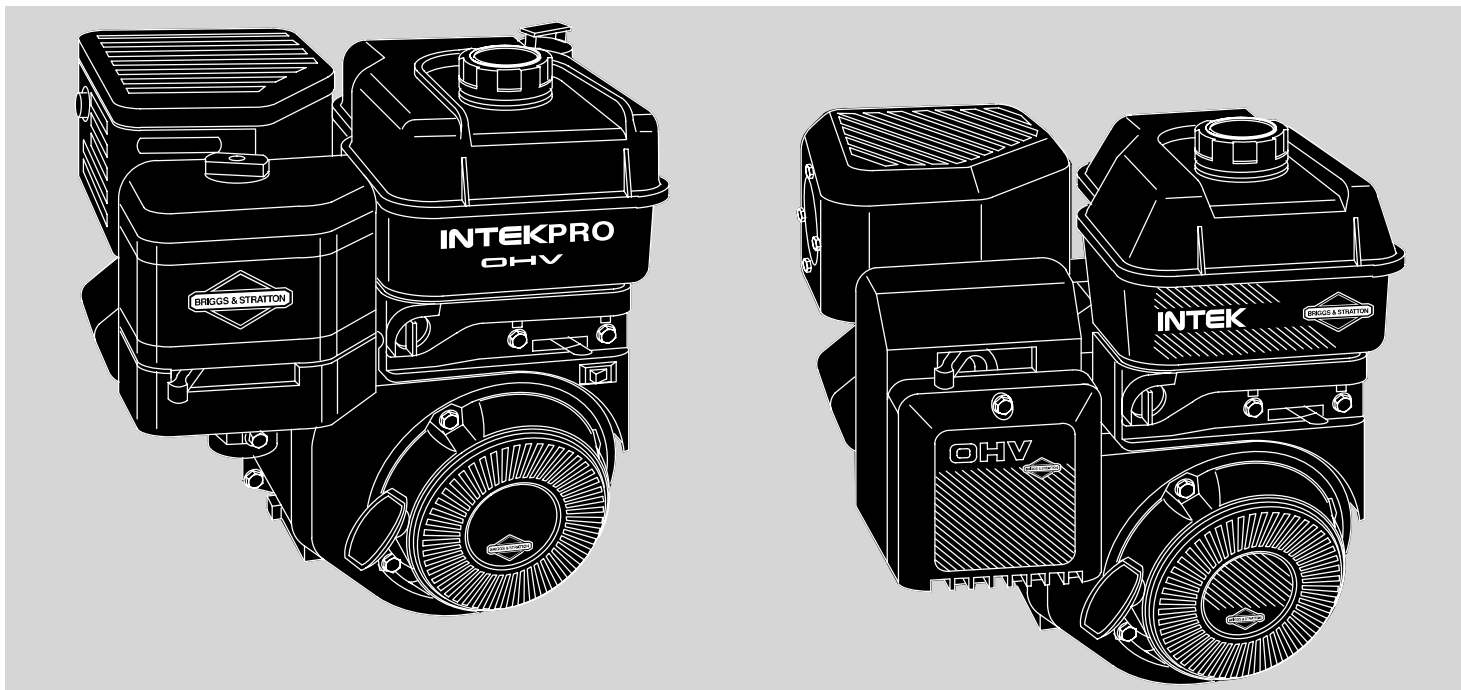


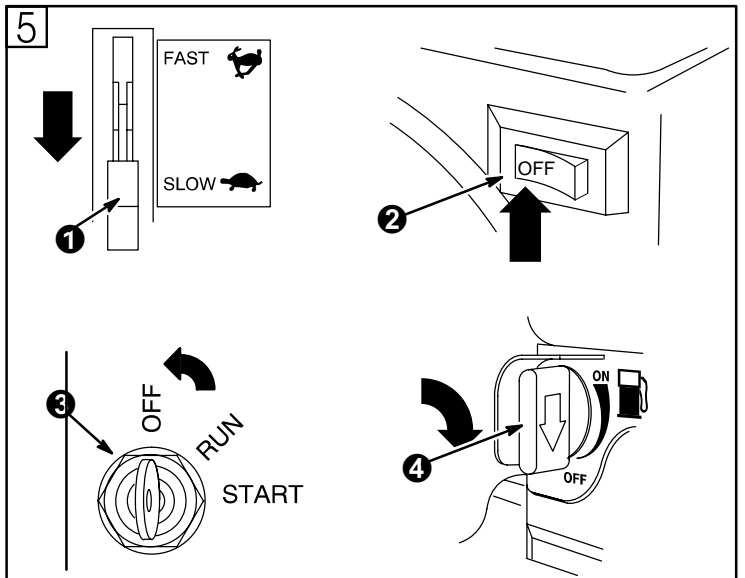
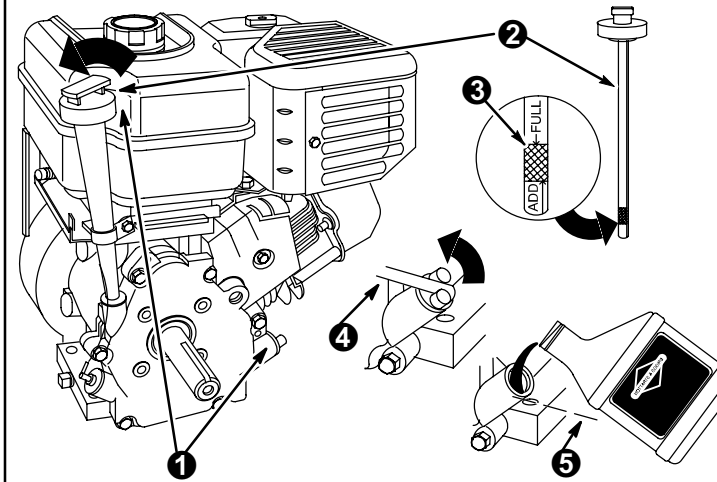
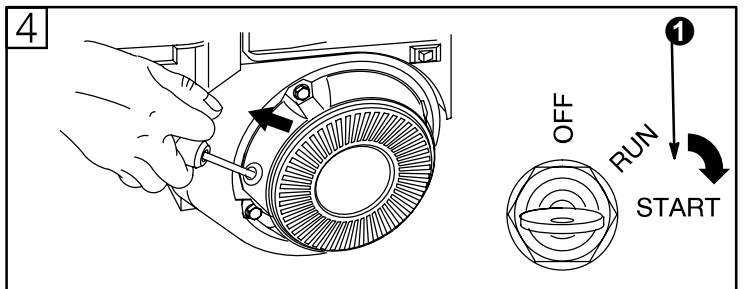
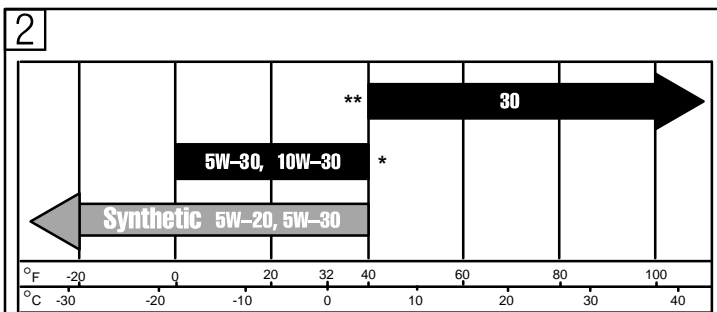
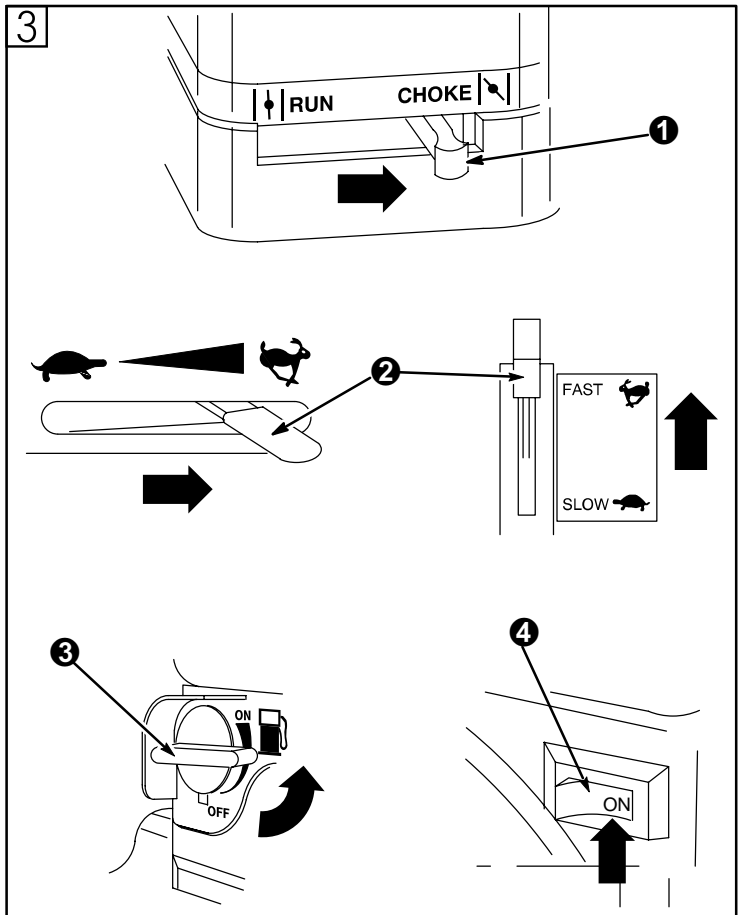
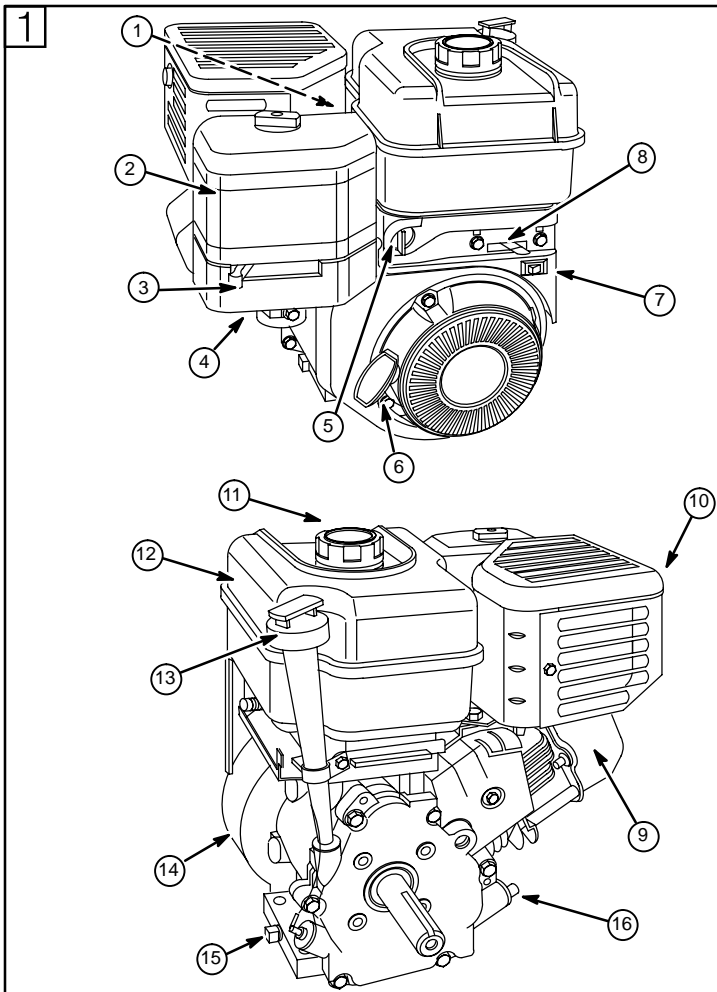


110400, 111400, 113400,
120400, 121400, 123400



- Ⓜ *Operator/Owner Manual*
- Ⓜ *Korisnički priručnik*
- Ⓜ *Příručka majitele a obsluhy*
- Ⓜ *Kezelési/Használati utasítás*
- Ⓜ *Instrukcja obsługi operatora/właściciela*
- Ⓜ *Manualul Utilizatorului/Posesorului*
- Ⓜ *Руководство оператора/владельца*
- Ⓜ *Priručnik za operaterja/lastnika*





Note: (This note applies only to engines used in the U.S.A.) Maintenance, replacement or repair of the emission control devices and systems may be performed by any nonroad engine repair establishment or individual. However, to obtain no charge repairs under the terms and provisions of the Briggs & Stratton warranty statement, any service or emission control part repair or replacement must be performed by a factory authorized dealer.



How To Use Manual Figures

1 - **9** refer to figures inside covers.

1 - **16** refer to engine components in figure **1**.

1 - **7** refer to part/action in figures.

A - **D** refer to service parts inside front cover.

Record your engine Model, Type and Code numbers here for future use.

Record your date of purchase here for future use.

Engine Components (see fig. **1**)

- 1** Spark plug wire
- 2** Air cleaner
- 3** Choke
- 4** Carburetor
- 5** Fuel shut-off valve
- 6** Rope handle
- 7** Stop switch/Oil Gard®, if equipped
- 8** Throttle
- 9** **Engine** **Model** **Type** **Code**
 xxxxxx xxxx xx xxxxxxxx
- 10** Muffler/Spark arrester, if equipped
- 11** Fuel fill
- 12** Fuel tank
- 13** Oil fill/Dipstick, if equipped
- 14** Blower housing
- 15** Oil Drain plug
- 16** Oil filler plug

Symbols



This safety alert symbol indicates that this message involves personal safety. Words danger, warning and caution indicate degree of hazard. Death, personal injury and/or property damage may occur unless instructions are followed carefully.



You are not ready to operate this engine if you have not read and understood the following safety items. Read this entire owner/operator manual and the operating instructions of the equipment this engine powers.



Remove spark plug wire and ground it (disconnect battery at negative terminal, if engine has electric starting system) when servicing or adjusting engine or equipment.



DO NOT run engine in an enclosed area. (Exhaust gases contain carbon monoxide, an odorless and deadly poison.)



DO NOT remove fuel tank cap nor fill fuel tank while engine is hot or running. DO NOT refuel indoors or in an unventilated area. (Allow engine to cool 2 minutes before refueling.)

Safety Precautions



The Briggs & Stratton engine you bought with your equipment is made of the finest material in a state-of-the-art manufacturing facility. Please understand that Briggs & Stratton sells engines to original equipment manufacturers. It also sells to others in the distribution chain who may sell to the ultimate consumer, an equipment manufacturer, another distributor or a dealer. As a result, Briggs & Stratton does not necessarily know the application on which the engine will be placed. For that reason, you should carefully read and understand the operating instructions of the equipment on which your engine is placed before you operate it.

You should also understand that there are equipment applications for which Briggs & Stratton does not approve the use of its engines. Briggs & Stratton engines are not to be used on vehicles with less than 4 wheels. They include motor bikes, aircraft products and All Terrain Vehicles. Moreover, Briggs & Stratton does not approve of its engines being used in competitive events. **FOR THAT REASON, BRIGGS & STRATTON ENGINES ARE NOT AUTHORIZED FOR ANY OF THESE APPLICATIONS.** Failure to follow this warning could result in death, serious injury (including paralysis) or property damage.

DO NOT run engine in an enclosed area. (Exhaust gases contain carbon monoxide, an odorless and deadly poison.)

DO NOT place hands or feet near moving or rotating parts.

DO NOT store, spill, or use gasoline near an open flame, nor near an appliance like a stove, furnace, or water heater that uses a pilot light or can create a spark.

DO NOT refuel indoors or in an unventilated area.

DO NOT remove fuel tank cap nor fill fuel tank while engine is hot or running. (Allow engine to cool 2 minutes before refueling.)

DO NOT operate engine if gasoline is spilled or when smell of gasoline is present or other explosive conditions exist. (Move equipment away from spill and avoid any ignition until gasoline has evaporated.)

DO NOT transport engine with fuel in tank or with fuel shut-off valve open.

DO NOT move choke control to CHOKE to stop engine.

DO NOT tamper with governor springs, links or other parts to increase engine speed. (Run engine at speed set for equipment manufacturer.)

DO NOT check for spark with spark plug removed. (Use an approved tester.)

DO NOT crank engine with spark plug removed. (If engine is flooded, place throttle in FAST and crank until engine starts.)

DO NOT strike flywheel with a hammer or hard object as this may cause flywheel to shatter in operation. (Use correct tools to service engine.)

DO NOT run engine if equipment is not stable and tipping can occur. Mount equipment to a stable base.

DO NOT operate engine without a muffler. Inspect periodically and replace if worn or leaking. If engine is equipped with muffler deflector, inspect periodically and, if necessary, replace with correct deflector.)

DO NOT operate engine with an accumulation of grass, leaves or other combustible material under, around or behind muffler/converter.

DO NOT touch hot muffler, cylinder, or fins which can cause burns.

DO NOT use this engine on any forest covered, brush covered, or grass covered unimproved land unless a spark arrester is installed on muffler. Spark arrester must be maintained in effective working order by owner and/or operator.

DO NOT start engine with air cleaner or air cleaner cover removed.

PREVENT ACCIDENTAL STARTING by removing spark plug wire and grounding it when servicing engine or equipment. Disconnect negative wire from battery terminal if equipped with electric starting system.

KEEP cylinder fins and governor parts free of dirt, grass and other debris which can affect engine speed.

PULL starter cord slowly until resistance is felt. Then pull cord rapidly to avoid kickback and prevent hand or arm injury.

USE fresh gasoline. Stale fuel can gum carburetor and cause leakage.

CHECK fuel lines and fittings frequently for cracks or leaks. Replace if necessary.

Use only Genuine Briggs & Stratton Parts or their equivalent. The use of replacement parts which are not of equivalent quality may damage the engine.

(California, U.S.A. - Proposition 65 warning statement)

WARNING:

The engine exhaust from this product contains chemicals known to the State of California to cause cancer, birth defects, or other reproductive harm.

Oil Recommendations (see fig. 2)

Engine shipped from Briggs & Stratton without oil. Before starting engine, fill with oil. Do not over-fill.

Use a high quality detergent oil classified "For Service SF, SG, SH," such as Briggs & Stratton "warranty certified" SAE 30 oil (see fig. A). Use no special additives with recommended oils. Do not mix oil with gasoline.

- * Air cooled engines run hotter than automotive engines. Using multi-viscosity oils (10W-30, etc.) above 40° F (4° C) will result in high oil consumption and possible engine damage. Check oil level more frequently if using these types of oils.
- ** SAE 30 oil, if used below 40° F (4° C), will result in hard starting and possible engine bore damage due to inadequate lubrication.

Check oil level. (Oil capacity is about 21 oz. or 0.6 liter.)

Place engine level and clean around oil fill 1.

Remove dipstick 2, wipe with clean cloth, insert and tighten down again. Remove dipstick and check oil level. Oil should be at FULL mark 3. If oil is required, add slowly. Do not over-fill.

OR

Remove oil filler plug 4. Oil should be full to overflowing 5. Tighten dipstick or oil filler plug firmly before starting engine.

Fuel Recommendations

Use clean, fresh, lead-free gasoline with a minimum of 85 octane. Leaded gasoline may be used if it is commercially available and if unleaded is unavailable. Purchase fuel in quantity that can be used within 30 days. See **Storage**.

In U.S.A. leaded gasoline may not be used. Some fuels, called oxygenated or reformulated gasolines, are gasolines blended with alcohols or ethers. Excessive amounts of these blends can damage the fuel system or cause performance problems. If any undesirable operating symptoms occur, use gasoline with a lower percentage of alcohol or ether.

Do not use gasoline which contains Methanol. Do not mix oil with gasoline.

For engine protection, we recommend using Briggs & Stratton Gasoline Additive (see fig. B) available from an Authorized Briggs & Stratton Service Dealer.

Check fuel level.

Clean around fuel fill before removing cap to refuel. Allow space in the fuel tank for fuel expansion.



DO NOT operate or refuel engine with spark plug access hole cover removed. Allow engine to cool 2 minutes before refueling.

Starting (see figs. 3 4)



ALWAYS KEEP HANDS AND FEET CLEAR OF MOWER BLADE AND/OR EQUIPMENT MOVING PARTS.



Do not use a pressurized starting fluid. Starting fluid is flammable. Severe engine damage or fire may occur.

Start, store and fuel equipment in level position.

Before starting (see fig. 3)

1. Move choke control 1 to CHOKE position.
2. Move throttle control 2 to FAST position.
3. Turn fuel shut-off valve 3 ON, if equipped.
4. Move stop control 4 to ON position, if equipped.

Note: OIL GARD® light in rocker stop switch 4, if equipped, warns of low oil level. Light will flicker and engine will not start, or restart. Oil must be added. Fill to FULL mark on dipstick or overflowing at oil filler plug. Do not over-fill. OIL GARD®, however, will not stop a running engine if the engine runs low on oil.

Rewind starter (see fig. 4)



Grasp rope handle and pull slowly until resistance is felt. Then pull cord rapidly to overcome compression, prevent kickback and start engine.

Repeat if necessary with choke in RUN position and throttle in FAST. When engine starts, operate in FAST position.

Electric starter (see fig. 4)

On engines equipped with 12 volt starting systems, turn key to START position 1. Repeat if necessary with throttle control in FAST position. When engine starts, operate in FAST position.

Note: If equipment manufacturer has supplied battery, charge it before trying to start engine, as equipment manufacturer recommends.

Note: Use short starting cycles (15 secs. per min.) to prolong starter life. Extended cranking can damage starter motor.

Stopping (see fig. 5)

Do not move choke control to CHOKE position to stop engine. Backfire or engine damage may occur. Move throttle control to IDLE or SLOW position 1, if equipped. Then move stop control to OFF position 2 or turn key to OFF 3. Close fuel shut-off valve 4.

Note: Always remove key from switch when equipment is not in use or left unattended.

Note: When engine is transported, close fuel shut-off valve to prevent leakage.

Adjustments



To prevent accidental starting, remove spark plug wire 1 and ground it and disconnect battery at negative terminal, if engine has electric starting system, before adjusting.

Throttle control adjustments (see fig. 6)

Manual friction control

If adjustment is required, loosen or tighten lock nut 2 until governor control lever 3 moves easily, but stays in set position when engine is running.

Fixed governor control

If adjustment is required, loosen lock nut 2. Move Governor control lever 3 to FAST position. Tighten lock nut.

Remote control

Loosen casing clamp screw 4. Move casing and wire 5 in direction of arrow to end of travel. Move throttle control to FAST position 6. Tighten casing clamp screw.

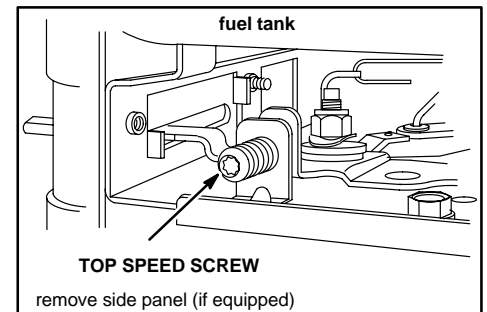
Carburetor adjustment



The manufacturer of the equipment on which this engine is installed specifies top speed at which the engine will be operated. DO NOT EXCEED this speed.

See an Authorized Briggs & Stratton Dealer for carburetor adjustment.

In the U.S.A. the carburetor on this engine is low emission. Air/fuel mixture is not adjustable. Governed idle and top speed have been set at the factory. If adjustment is required, see an Authorized Briggs & Stratton Service Dealer. DO NOT ADJUST TOP SPEED SCREW.



Maintenance (see figs. 7 8 9)

See **Maintenance Schedule**. Follow the hourly or calendar intervals, **whichever occur first**. More frequent service is required when operating in adverse conditions.



To prevent accidental starting, remove spark plug wire ❶ and ground it and disconnect battery at negative terminal, if engine has electric starting system, before servicing.

Oil service (see fig. 7)

Check oil level regularly.

Be sure correct oil level is maintained. Check every 8 hours or daily, before starting engine. See oil filling procedure under **Oil Recommendations**. Do not over-fill.

Change oil.

Change oil after first 5 hours of operation. Change oil while engine is warm. Refill with new oil of recommended SAE viscosity grade. (see fig. 2)

Gear reduction, if equipped

Remove oil fill plug ❷ and oil level plug ❸. Drain oil every 100 hours of operation or every season. To refill, pour SAE 30 oil into oil fill hole until it runs out level check hole. Replace both plugs. Oil fill plug has a vent hole ❹ and must be installed on top of gear case cover.

Air cleaner service (see fig. 8)

Dual element air cleaners

Replace pre-cleaner ❷ and/or cartridge ❸ if very dirty or damaged. (see fig. C)

To service pre-cleaner, if equipped, wash in liquid detergent and water. Squeeze dry in a clean cloth and allow to dry thoroughly. DO NOT oil pre-cleaner.

To service cartridge, clean by tapping gently on a flat surface. DO NOT oil cartridge.

Note: Do not use petroleum solvents, e.g., kerosene, which will cause the cartridge to deteriorate. Do not use **pressurized air** to clean cartridge. Pressurized air can damage the cartridge.

Rectangular dual element air cleaner

1. Loosen screw and tilt cover down. Remove pre-cleaner (if equipped) and cartridge assembly from cover.
2. After servicing pre-cleaner and cartridge, place pre-cleaner, if equipped (arrows up) over cartridge pleats (pre-cleaner lip will be at bottom of pleats).
3. Install pre-cleaner and cartridge assembly in cover.
4. Insert tabs on cover into slots ❹ in bottom of base.
5. Tilt cover up and tighten screw securely.

Oval dual element air cleaner

1. Remove knob and cover ❷. Lift air cleaner off stud.
2. After cleaning, reassemble pre-cleaner on cartridge. Push air cleaner firmly down on stud ❸ to seat in base.
3. Push cover squarely onto base. Tighten knob securely.

Oil foam® air cleaner

To service foam element ❹, wash in liquid detergent and water. Squeeze dry in a clean cloth. Saturate in engine oil. Squeeze in clean, absorbent cloth to remove ALL EXCESS oil.

1. Loosen screw and tilt cover down. Remove bracket ❺ and foam element from cover.
2. Clean bracket, cover and base.
3. Install bracket and foam element in cover.
4. Insert tabs on cover into slots in bottom of base.
5. Tilt cover up and fasten securely with screw.

Maintenance Cont'd

Spark plug service (see figs. 8 and D)

Clean/replace spark plug every 100 hours or every season, whichever occurs first. Spark plug wrench is available from any Authorized Briggs & Stratton Service Dealer.

Note: In some areas, local law requires using a resistor spark plug to suppress ignition signals. If this engine was originally equipped with resistor spark plug, use same type of spark plug for replacement.

Spark plug gap ❹ should be .76 mm or 0.030 in.

Keep engine clean (see figs. 9 and D)

Periodically remove chaff and debris build-up from engine. Do not spray engine with water to clean because water could contaminate fuel. Clean with a brush or compressed air.



Daily or more often, before running engine, clean muffler area ❷ to remove all grass and combustible debris.

If muffler is equipped with spark arrester screen ❸, remove spark arrester screen for cleaning and inspection every 50 hours or every season. Replace if damaged.

To assure smooth operation, keep governor linkage, springs and controls ❷ free of debris.



Replace in-line fuel filter ❹. Drain fuel tank or close fuel shut-off valve before replacing fuel filter.

Clean cooling system. Chaff or debris may clog engine's air cooling system, especially after prolonged operation. Internal cooling fins and surfaces may require cleaning to prevent overheating and engine damage. Remove blower housing and clean as shown ❹.

Check valve clearance (intake and exhaust .10-.15 mm).

Maintenance Schedule

Follow the hourly or calendar intervals, whichever occur first. More frequent service is required when operating in adverse conditions noted below.

First 5 Hours

- Change oil

Every 8 hours or daily

- Check oil level
- Clean around muffler

Every 25 hours or every season

- Change oil if operating under heavy load or high ambient temperature
- Service air cleaner pre-cleaner*

Every 50 hours or every season

- Change oil
- Clean and inspect spark arrester, if equipped.

Every 100 hours or every season

- Service oil foam® air cleaner or cartridge*
- Clean/replace spark plug
- Change gear reduction oil, if equipped
- Clean cooling system*

Every season

- Check valve clearance

* Clean more often under dusty conditions, or when airborne debris or chaff is present.

Storage

Engines stored over 30 days need to be protected or drained of fuel to prevent gum from forming in fuel system or on essential carburetor parts.

For engine protection, we recommend use of Briggs & Stratton Gasoline Additive ❷ available from an Authorized Briggs & Stratton Service Dealer. Mix Additive with fuel in fuel tank or storage container. Run engine for a short time to circulate Additive through carburetor. Engine and fuel can be stored up to 24 months.

Note: If Additive is not used or if engine is operating on gasoline containing alcohol, e.g. gasohol, remove all fuel from tank and run engine until it stops from lack of fuel.

1. Change oil. See **Oil service**. (see figs. 2 7)
2. Remove spark plug and pour about 15 ml (1/2 oz) of engine oil into cylinder. Replace spark plug and crank slowly to distribute oil.
3. Clean chaff and debris from cylinder and cylinder head fins, under finger guard and behind muffler.
4. Store in a clean and dry area, but NOT near a stove, furnace or water heater which uses a pilot light or any device that can create a spark.

Service

See an Authorized Briggs & Stratton Service Dealer. Each one carries a stock of Genuine Briggs & Stratton Parts and is equipped with special service tools. Trained mechanics assure expert repair service on all Briggs & Stratton engines. Only dealers advertising as "Authorized Briggs & Stratton" are required to meet Briggs & Stratton standards.

When you purchase equipment powered by a Briggs & Stratton engine, you are assured of highly skilled, reliable service at more than 30,000 Authorized Service Dealers worldwide, including more than 2,700 Master Service Technicians. Look for these signs wherever Briggs & Stratton service is offered.



You may locate your nearest Authorized Briggs & Stratton Service Dealer in our dealer locator map on our web site www.briggsandstratton.com or in the "Yellow Pages"™ directory under "Engines, Gasoline" or "Gasoline Engines," or "Lawn Mowers" or similar category.



Note: Walking fingers logo and "Yellow Pages" are registered trademarks in various jurisdictions.

An illustrated shop manual includes "Theories of Operation," common specifications and detailed information covering adjustment, tune-up and repair of Briggs & Stratton overhead valve, single cylinder, 4 cycle engines. Order P/N 274008 from an Authorized Briggs & Stratton Service Dealer.

Insist on Genuine Briggs & Stratton replacement parts with our logo on the box and/or part. Non-original parts may not perform as well and may void your warranty.

About Your Engine Warranty

Briggs & Stratton welcomes warranty repair and apologizes to you for being inconvenienced. Any Authorized Service Dealer may perform warranty repairs. Most warranty repairs are handled routinely, but sometimes requests for warranty service may not be appropriate. For example, warranty would not apply if engine damage occurred because of misuse, lack of routine maintenance, shipping, handling, warehousing or improper installation. Similarly, warranty is void if the serial number of the engine has been removed or the engine has been altered or modified.

If a customer differs with the decision of the Service Dealer, an investigation will be made to determine whether the warranty applies. Ask the Service Dealer to submit all supporting facts to his Distributor or the Factory for review. If the Distributor or the Factory decides that the claim is justified, the customer will be fully reimbursed for those items that are defective. To avoid misunderstanding which might occur between the customer and the Dealer, listed below are some of the causes of engine failure that the warranty does not cover.

Improper maintenance:

The life of an engine depends upon the conditions under which it operates, and the care it receives. Some applications, such as tillers, pumps and rotary mowers, are very often used in dusty or dirty conditions, which can cause what appears to be premature wear. Such wear, when caused by dirt, dust, spark plug cleaning grit, or other abrasive material that has entered the engine because of improper maintenance, is not covered by warranty.

This warranty covers engine related defective material and/or workmanship only, and not replacement or refund of the equipment to which the engine may be mounted. Nor does the warranty extend to repairs required because of:

1. PROBLEMS CAUSED BY PARTS THAT ARE NOT ORIGINAL BRIGGS & STRATTON PARTS.
2. Equipment controls or installations that prevent starting, cause unsatisfactory engine performance, or shorten engine life. (Contact equipment manufacturer.)
3. Leaking carburetors, clogged fuel pipes, sticking valves, or other damage, caused by using contaminated or stale fuel. (Use clean, fresh, lead-free gasoline and Briggs & Stratton gasoline stabilizer, Part No. 5041.)
4. Parts which are scored or broken because an engine was operated with insufficient or contaminated lubricating oil, or an incorrect grade of lubricating oil (check oil level daily or after every 8 hours of operation. Refill when necessary and change at recommended intervals.) Read "Owner's Manual."
5. Repair or adjustment of associated parts or assemblies such as clutches, transmissions, remote controls, etc., which are not manufactured by Briggs & Stratton.
6. Damage or wear to parts caused by dirt, which entered the engine because of improper air cleaner maintenance, re-assembly, or use of a non-original air cleaner element or cartridge. (At recommended intervals, clean and re-oil the Oil-Foam® element or the foam pre-cleaner, and replace the cartridge.) Read "Owner's Manual."

7. Parts damaged by over-speeding, or overheating caused by grass, debris, or dirt, which plugs or clogs the cooling fins, or flywheel area, or damage caused by operating the engine in a confined area without sufficient ventilation. (Clean fins on the cylinder, cylinder head and flywheel at recommended intervals.) Read "Owner's Manual."
8. Engine or equipment parts broken by excessive vibration caused by a loose engine mounting, loose cutter blades, unbalanced blades or loose or unbalanced impellers, improper attachment of equipment to engine crankshaft, over-speeding or other abuse in operation.
9. A bent or broken crankshaft, caused by striking a solid object with the cutter blade of a rotary lawn mower, or excessive v-belt tightness.
10. Routine tune-up or adjustment of the engine.
11. Engine or engine component failure, i.e., combustion chamber, valves, valve seats, valve guides, or burned starter motor windings, caused by the use of alternate fuels such as, liquified petroleum, natural gas, altered gasolines, etc.

Warranty is available only through service dealers which have been authorized by Briggs & Stratton Corporation. your nearest Authorized Service Dealer is listed in the "Yellow Pages™" of your telephone directory under "Engines, Gasoline" or "Gasoline Engines," "Lawn Mowers," or similar category.

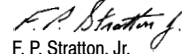
Briggs & Stratton Engine Owner Warranty Policy

Effective July 1, 1998, replaces all undated Warranties and all Warranties dated before July 1, 1998

LIMITED WARRANTY

"Briggs & Stratton Corporation will repair or replace, free of charge, any part, or parts of the engine that are defective in material or workmanship or both. Transportation charges on parts submitted for repair or replacement under this Warranty must be borne by purchaser. This warranty is effective for the time periods and subject to the conditions provided for in this policy. For warranty service contact your nearest Authorized Service Dealer as listed in the "Yellow Pages™" under "Engines, Gasoline," "Gasoline Engines," "Lawn Mowers" or similar category. THERE IS NO OTHER EXPRESS WARRANTY. IMPLIED WARRANTIES, INCLUDING THOSE OF MERCHANTABILITY AND FITNESS FOR A PARTICULAR PURPOSE ARE LIMITED TO ONE YEAR FROM PURCHASE, OR TO THE EXTENT PERMITTED BY LAW ANY AND ALL IMPLIED WARRANTIES ARE EXCLUDED. LIABILITY FOR CONSEQUENTIAL DAMAGES UNDER ANY AND ALL WARRANTIES ARE EXCLUDED TO THE EXTENT EXCLUSION IS PERMITTED BY LAW. Some states do not allow limitations on how long an implied warranty lasts, and some states do not allow the exclusion or limitation of incidental or consequential damages, so the above limitation and exclusion may not apply to you. This warranty gives you specific legal rights and you may also have other rights which vary from state to state."

Briggs & Stratton Corporation


F. P. Stratton, Jr.
Chairman and Chief Executive Officer

WARRANTY PERIOD

ENGINES	WITHIN U.S.A. AND CANADA		OUTSIDE U.S.A. AND CANADA	
	CONSUMER USE*	COMMERCIAL USE*	CONSUMER USE*	COMMERCIAL USE*
All Vanguard™ engines.	2 year - engine ‡ / Lifetime** - Magnetron® ignition			
All Diamond Plus®, Industrial Plus™, I/C® engines and sleeve bore Intek series.	2 year	1 year	2 year ‡	1 year
Quantum® and Diamond Power®.	2 year	90 days	2 year † ‡	90 days
All standard engines and Kool Bore™ Intek series installed on lawn mowers, riders, edgers, chippers, shredders, tillers, fun carts, and all Sno/Gard engines.	2 year	90 days	1 year	90 days
All other standard engines and Classic™ series.	1 year	90 days	1 year	90 days

* For purposes of this warranty policy, "consumer use" means personal residential household use by the original retail consumer. "Commercial use" means all other uses, including use for commercial, income producing or rental purposes. Once an engine has experienced commercial use, it shall thereafter be considered as a commercial use engine for purposes of this warranty. *Engines used in competitive racing or on commercial or rental tracks are not warrantied.*

** Lifetime limited warranty of the Magnetron® ignition covers parts and labor for the first five (5) years from the date of purchase; thereafter only parts. "Lifetime" means lifetime of the engine in the hands of the original purchaser.

† One (1) year in Australia, New Zealand, Middle East and Africa.

‡ One (1) year in India.

**NO WARRANTY REGISTRATION CARD IS NECESSARY TO OBTAIN WARRANTY ON BRIGGS & STRATTON ENGINES.
YOU MUST SAVE THE PURCHASE RECEIPT. A PROOF OF PURCHASE DATE WILL BE REQUIRED TO OBTAIN WARRANTY.**

Briggs & Stratton Engines Are Made Under One Or More Of The Following Patents: Design D-247.177 (Other Patents Pending)										
5,642,701	5,497,679	5,243,878	5,191,864	5,105,331	5,040,644	4,995,357	4,875,448	4,633,556	4,453,507	DES. 309,458
5,606,948	5,320,795	5,235,943	5,188,069	5,086,890	5,040,503	4,977,879	4,819,593	4,630,498	4,430,984	DES. 309,457
5,548,955	5,271,363	5,234,038	5,186,142	5,070,829	5,009,208	4,971,219	4,719,682	4,522,080	4,355,253	DES. 308,872
5,546,901	5,269,713	5,197,425	5,138,996	5,058,544	4,996,956	4,895,119	4,694,792	4,520,288	4,270,509	DES. 308,871
5,503,125	5,265,700	5,197,422								

